



SuperJet Truck Mounted Jetters



Parts, Consumables & Accessories

800.837.9711 • superproductsllc.com

TABLE OF CONTENTS

Nozzles 4
Water Guns & Replacement Parts 8
Sewer Hose & Accessories 9
Clamps & Fittings 11
Gauges 12
Cylinders & Valves Pneumatic 12
Cylinders Hydraulic 14
Valves – Water 14
Lights & Accessories 16
Pumps, Motors, Manifolds 19
Filters & Accessories 21
Heaters 22
Fluids: Oil 22
Sensors 24
Water Systems & Plumbing 23
Water Pump & Parts 27
Reel Assemblies & Parts 29
Water Tanks & Decals 36
Pendants / Wireless Remote System 40
Electrical System / Harness 41
Body Assemblies 43
Chassis & Powerframe 44
Options 45
Engineering Drawings 46
Terms & Conditions 58

NOZZLES

3D Cleaning Nozzle



Highly efficient all around cleaner made of extremely wear resistant, hardened stainless steel. Great for general pipe cleaning and preventive maintenance work. A forward spraying jet is also included.

- 4 – 15° Rear Jets
- 4 – 25° Rear Jets
- Ceramic Inserts

Part No.	GPM/PSI	Hose Connection	Weight	Pipe Diameter
6000-02065	5030 •	3/4"	5 lbs.	6-15"
6000-02065	6520	1"	5 lbs.	6-15"
6000-02065	8020	1"	5 lbs.	6-15"

3D Extreme Nozzle



Used in pipes that may have holes in the bottom or offsets. Strong jet pattern and exceptional cleaning and pulling power. One forward jet offers a penetration option as well.

- 1 – Forward Jets
- 8 – 11° Rear Jets
- Ceramic Inserts

Part No.	GPM/PSI	Hose Connection	Weight	Pipe Diameter
6000-02012	5030 •	3/4"	10 lbs.	6-15"
6000-02012	6520	1"	10 lbs.	6-15"
6000-02012	8020	1"	10 lbs.	6-15"

Chisel Nozzle Large



Excellent at difficult cleaning processes, especially when pipe deformations caused by outer pressure or total blockage are present. A drill point can be added to the front of the chisel as well

- 4 – 12° Forward Jets
- 8 – 30° Rear Jets
- Ceramic Inserts

Part No.	GPM/PSI	Hose Connection	Weight	Pipe Diameter
6000-02011	5030 •	3/4"	2 lbs.	8-15"
6000-02011	6520	1"	2 lbs.	8-12"
6000-02011	8020	1"	2 lbs.	8-12"

Chisel Nozzle XL



Recommended for large sewer/storm water lines, this nozzle has many advantages, changeable drill point, penetrates solid root and debris masses.

- 5 – 12° Forward Jets
- 6 – 30° Rear Jets

Part No.	GPM/PSI	Hose Connection	Weight	Pipe Diameter
6000-02014	6520 •	1"	5.5 lbs.	8-20"
6000-02014	8020	1"	5.5 lbs.	8-20"

NOZZLES

Cycle Nozzle 3D

Produced from hardened stainless steel includes 3D fluid mechanics and two different rear spray angles. Ideal for general pipe cleaning and preventative maintenance work.



- 4 – 12° Rear Jets
- 4 – 20° Rear Jets
- Ceramic Inserts

Part No.	GPM/PSI	Hose Connection	Weight	Pipe Diameter
6000-02017	5030 •	3/4"	11 lbs.	8-20"
6000-02017	6520	1"	11 lbs.	8-20"
6000-02017	8020	1"	11 lbs.	8-20"

Super Cycle Nozzle 3D



Large heavy nozzle constructed from hardened stainless steel with 12 rear jets, ideal for cleaning large pipes. Power jets flush dirt from roots before cutting or general cleaning.

- 6 – 12° Rear Jets
- 6 – 28° Rear Jets
- Ceramic Inserts

Part No.	GPM/PSI	Hose Connection	Weight	Pipe Diameter
6000-02013	6520 •	1"	17.5 lbs.	10-40"
6000-02013	8020	1"	17.5 lbs.	10-40"

Radial Cleaning Nozzle



3D fluid mechanics deliver smooth water to the rear fan jets creating a 360° spray pattern. Capable of removing grease, scale, dirt and sand without leaving streaks. The additional 15 propulsion jets move the nozzle up the line and help transport material back to the manhole. Perfect nozzle to use prior to CCTV inspection.

- 6 – 45° Fan Jets
- 6 – 15° Rear Propulsion Jets
- Ceramic Inserts

Part No.	GPM/PSI	Hose Connection	Weight	Pipe Diameter
6000-02072	5030 •	3/4"	12 lbs.	8-20"
6000-02072	6520	1"	12 lbs.	8-20"
6000-02072	8020	1"	12 lbs.	8-20"

Rotor Nozzle



Three one-piece ceramic nozzle inserts located in the middle rotating section will remove grease, dirt and light roots from pipe. Rear propulsion jets help flush the material. Non corrosive rotating center requires low maintenance, rest of nozzle constructed of hardened stainless steel.

- 3 – 90°/75°/60° Rotation Jets
- 6 Rear Jets
- Ceramic Inserts

Part No.	GPM/PSI	Hose Connection	Weight	Pipe Diameter
6000-02023	5030	3/4"	3lbs.	6-10"
6000-02023	6520 •	1"	3lbs.	8-12"
6000-02023	8020	1"	3lbs.	8-12"

NOZZLES

Large Rocket Nozzle 3D



Extremely high efficiency unequaled propulsion, the narrow jet angle can flush dirt, mud, rocks and any other large heavy material found in sewer or storm pipe.

- 8 – 7° Rear Jets
- Ceramic Inserts
- 3D Fluid Mechanics

Part No.	GPM/PSI	Hose Connection	Weight	Pipe Diameter
6000-02075	5030 •	3/4"	12 lbs.	8-20"
6000-02075	6520	1"	12 lbs.	8-20"
6000-02075	8020	1"	12 lbs.	8-20"

Pipe Wolf Nozzle



Unique turbine driven cutter can reach 6,000 rpm. Extremely efficient on total obstructions caused by roots, silt, grease. Succeeds where hydrodynamic tool fails. No lubrication needed.

- Ceramic Inserts
- 3D Fluid Dynamics

Part No.	GPM/PSI	Hose Connection	Weight	Pipe Diameter
6000-02074	5030 •	3/4"	5 lbs.	6-12"
6000-02074	6520	1"	5 lbs.	6-15"
6000-02074	8020	1"	5 lbs.	6-15"

Small Rocket Nozzle 3D



Extremely high efficiency unequaled propulsion, the narrow jet angle can flush dirt, mud, rocks and any other large heavy material found in sewer or storm pipe.

- 8 – 7° Rear Jets
- Ceramic Inserts
- 3D Fluid Mechanics

Part No.	GPM/PSI	Hose Connection	Weight	Pipe Diameter
6000-02076	5030 •	3/4"	5 lbs.	6-12"
6000-02076	6520	1"	5 lbs.	6-15"
6000-02076	8020	1"	5 lbs.	6-15"

Standard Nozzle



- Wear-resistant material
- Light and maneuverable
- Inexpensive yet highly efficient
- Front jet for penetration is also available
- 5 – 15° Spray Pattern
- 5 – 20° Spray Pattern

Part No.	GPM/PSI	Hose Connection	Weight	Pipe Diameter
6000-02015	5030 •	3/4"	1 lbs.	6-8"
6000-02015	6520	1"	1 lbs.	6-12"
6000-02015	8020	1"	1 lbs.	6-12"

Storm Surge 3D Bottom Cleaner Nozzle



A highly efficient floor cleaner of hardened stainless steel, built in power manifold with fixed jets. Roll over bars enable this nozzle to return to its correct position. One piece ceramic inserts and high pressure swivel come standard on this nozzle.

- Ceramic Inserts
- 3D Fluid Dynamics

Part No.	GPM/PSI	Hose Connection	Weight	Pipe Diameter
----------	---------	-----------------	--------	---------------

SIX JETS

6000-02047	6520	1"	21 lbs.	12-15"
6000-02047	8020	1"	21 lbs.	12-15"

EIGHTJETS

6000-02048	6520 •	1"	40 lbs.	15-30"
6000-02048	8020	1"	40 lbs.	15-30"

TEN JETS

6000-02018	6520	1"	56 lbs.	18-40"
6000-02018	8020	1"	56 lbs.	18-40"

TWELVE JETS

6000-02050	6520	1"	58 lbs.	20-80"
6000-02050	8020	1"	58 lbs.	20-80"

FOURTEEN JETS

6000-02049	8020	1"	60 lbs.	20-96"
------------	------	----	---------	--------

Primus II Nozzle



The Primus is operated by water coming from a pressurized hose. No lubrication needed for low maintenance and operator ease of use. For potable or reclaimed water with flow rates of 18 GPM – 80 GPM, for 6" to 20" pipe and operating pressures of 2000 PSI – 3600 PSI max.

- 1 Front Jet
- 5 Rear Jets
- 1 Radial Jets

Part No.	GPM/PSI	Hose Connection	Weight	Pipe Diameter
6000-02270	5030 •	3/4"	6 lbs.	6-10"
6000-02270	6520	1"	9 lbs.	6-10"
6000-02270	8020	1"	9 lbs.	6-10"

Turbo II Nozzle



The chain retainer is driven by a high performance turbine; achieving maximum results in the removal of roots, grease and mineral deposits from sewer lines. The chains are not rigid and do not damage the pipes .

- Additional skids sold separately. Comes standard setup for 6"

Part No.	GPM/PSI	Hose Connection	Weight	Pipe Diameter
3000-02981	5030 •	3/4"	—	6-12"
3000-02981	6520	1	—	6-12"
3000-02981	8020	1"	—	6-12"

NOZZLES

Turbo II Nozzle with Flexible Skid



You can switch from smaller size to larger sizes in less than five minutes. It uses the same high RPM turbine and chain as the fixed skid turbo retainers. Low maintenance, no lubrication required.

Part No.	GPM/PSI	Hose Connection	Weight	Pipe Diameter
6000-02021	5030	3/4"	—	6-12"
6000-02021	6520	1"	—	6-12"
6000-02021	8020	1"	—	6-12"

Turbo III Nozzle with Flexible Skid



You can switch from smaller size to larger sizes in less than five minutes. It uses the same high RPM turbine and chain as the fixed skid turbo retainers. Low maintenance, no lubrication required. Extra chain included.

- Extension kit for 21" – 32" • Ceramic Inserts

Part No.	GPM/PSI	Hose Connection	Weight	Pipe Diameter
6000-02083	6520 •	1"	—	10-20"
6000-02083	8020	1"	—	10-20"
6000-02083	10020	1-1/4"	—	10-20"

WATER GUNS & REPLACEMENT PARTS

Handgun, SS Couplings, 1/2"



Part Number	Description
9010-01146 •	Handgun, SS Couplings, 1/2" (photo)
6000-00685	Male Coupler Quick Disconnect w/valve 1/2"
6023-00009	Nipple, Hex 0.50 MNPT
6000-01826	Handgun, 21 GPM
6000-02486	Male Quick Disconnect w/o valve 1/2"

Lance w/Adjustable Nozzle & Handle



Part Number	Description
9010-01150 •	Lance w/adjustable Nozzle & Handle (photo)
6000-00975	Female Quick Disconnect w/o valve 1/2"
6000-01694	Handgun for Lance
6000-01875	Adjustable Nozzle
6000-01695	Lance Handle
0024-00005	Bushing Hx-Red .50 x .25

Washdown Gun w/Lance



Part Number	Description
0023397	Washdown Gun w/Lance

Handgun Hose Assembly 35' x 1/2"



Part Number	Description
9410-02179	Handgun Hose Assembly 35' x 1/2"

SEWER HOSE & ACCESSORIES

3" x 36" Tiger Tail w/Rope



Part Number	Description
3000-02601	3" x 36" Tiger Tail w/Rope

Hose 1" – 2500 PSI Polymer



Part Number	Description
3665-40000	Hose 1" x 400' – 2500 PSI Polymer
3665-50000	Hose 1" x 500' – 2500 PSI Polymer
3665-60000	Hose 1" x 600' – 2500 PSI Polymer
3665-80000	Hose 1" x 800' – 2500 PSI Polymer
3665-96000	Hose 1" x 960' – 2500 PSI Polymer

Plastic Fill Hose



Part Number	Description
0025085	Plastic Fill Hose 2-1/2" x 25' w/Camlock
3500-00219	Plastic Fill Hose 2-1/2" x 25' w/Swivel
3500-00245	Plastic Fill Hose 2-1/2" x 50' w/Swivel

Leader Hose



Part Number	Description
3736-12000-0012	Leader Hose 3/4" x 120"
3736-12000-0016	Leader Hose 1" x 120"

Cotton Fill Hose 2-1/2" x 25'



Part Number	Description
0027059	Cotton Fill Hose 2-1/2" x 25' w/Camlock

Nozzle Extension



Part Number	Description
9050-00038-0001	Nozzle Extension 3/4"
9050-00038-0002	Nozzle Extension 1"

SEWER HOSE & ACCESSORIES

Nozzle Extension – Finned



Part Number	Description
9050-00039	Nozzle Extension – Finned 3/4"
9050-00058	Nozzle Extension – Finned 1"

Sewer Hose Wiper 1"



Part Number	Description
9010-00106	Sewer Hose Wiper 1"

Rubber Scraper Inserts for Hose Wiper



Part Number	Description
3500-00193	Rubber Scraper Inserts for Hose Wiper

Grabber Bar



Part Number	Description
0025085	Grabber Bar

Hydrant Wrench



Part Number	Description
3000-01242	Hydrant Wrench

30" – 90° Handle Manhole Hook



Part Number	Description	Weight
3000-01244	30" - 90° Handle Manhole Hook	7 lbs

CLAMPS & FITTINGS

Gruvlok Coupling 3"



Part Number	Description
0001829-0300	Gruvlok Coupling 3"

Quick Change Clamp – 10"



Part Number	Description
0002090	Quick Change Clamp 10"

Wire Spiral Clamp 2.00



Part Number	Description
0258-00001	Wire Spiral Clamp 2.00

Camlock Adapter A-Series 2.50



Part Number	Description
0417-10008	Camlock Adapter A-Series 2.50

Hose Clamp 3.75" to 4.63"



Part Number	Description
3000-00046	Hose Clamp 3.75" to 4.63"

Dust Cap 2.50 V-Series



Part Number	Description
3000-02694	Dust Cap 2.50 V-Series

King Nipple PVC 2.00



Part Number	Description
3500-00371	King Nipple PVC 2.00

GAUGES

Pressure Gauge 0-160 PSI



Part Number	Description
0020256	Pressure Gauge 0-160 PSI

Hydraulic Pressure Gauge Near



Part Number	Description
6000-00260	Hydraulic Pressure Gauge Near

Level Gauge



Part Number	Description
0030484	Level Gauge

CYLINDERS & VALVES – PNEUMATIC

Pressure Protection Valve



Part Number	Description
0024453	Pressure Protection Valve

3-Way Ball Valve, 3/8" NPT (F)



Part Number	Description
0027838	3-Way Ball Valve, 3/8" NPT (F)

CYLINDERS & VALVES – PNEUMATIC

Manifold, Pneumatic 3 Port



Part Number	Description
0028398	Manifold, Pneumatic 3 Port

Solenoid, Single, 5 Port



Part Number	Description
0029511	Solenoid, Single, 5 Port

Ball Valve Electric / Air, 1"



Part Number	Description
0030357	Ball Valve Electric / Air, 1"

Cylinder Pneu. 1.75 Bore x 3.625" Stroke



Part Number	Description
0031047	Cylinder Pneumatic 1.75 Bore x 3.625" Stroke

4-Way Air Valve



Part Number	Description
6000-00536	4-Way Air Valve

Valve, Air Operate



Part Number	Description
6000-00787	Valve, Air Operate

Air Regulator – 1/4" NPT



Part Number	Description
6000-01975	Air Regulator – 1/4" NPT

Cylinder, Pneu. 2.00 Bore x 6.0" Stroke



Part Number	Description
6000-02285	Cylinder, Pneumatic 2.00 Bore x 6.0" Stroke

Air Solenoid Valve



Part Number	Description
6000-02286	Air Solenoid Valve

CYLINDERS – HYDRAULIC

Clevis, Piston Rod



Part Number	Description
6000-00306	Clevis, Piston Rod

Hydraulic Cylinder 2.50 Bore x 60" Stroke



Part Number	Description
0029508	Hydraulic Cylinder 2.50 Bore x 6.0" Stroke

VALVES – WATER

1" SAE Ball Valve



Part Number	Description
0005909	1" SAE Ball Valve

Multi-Way Valve, 3000 PSI



Part Number	Description
0026259	Multi-Way Valve, 3000 PSI

1/2" SAE Ball Valve 3000 PSI



Part Number	Description
0006603	1/2" SAE Ball Valve 3000 PSI

Ball Valve, 3000 PSI, 1.25"



Part Number	Description
0031071	Ball Valve, 3000 PSI, 1.25"

Butterfly Valve



Part Number	Description
6000-01233	3" Butterfly Valve
0029972	4" Butterfly Valve

Ball Valve Locking



Part Number	Description
0031147-00008	Ball Valve Locking 1/2"
0031147-00012	Ball Valve Locking 3/4"

Ball – Bronze Valve Low Pressure



Part Number	Description
6000-01030-0003	Ball – Bronze Valve 0.50 Low Pressure
6000-01030-0008	Ball – Bronze Valve 2.00 Low Pressure

Check Valve, 1/4" SS



Part Number	Description
0025820	Check Valve, 1/4" SS

Drain Valve, 1/4" NPTF



Part Number	Description
6000-02112	Drain Valve, 1/4" NPTF

Check Valve, 3/8" M x F, NPT



Part Number	Description
0027837	Check Valve, 3/8" M x F, NPT

LIGHTS & ACCESSORIES

Safety Director Bar, Amber



Part Number	Description
0005914	Safety Director Bar, Amber

Safety Director Control Box



Part Number	Description
0005915	Safety Director Control Box

Lamp, Marker / Clearance, Red



Part Number	Description
0006227	Lamp, Marker / Clearance, Red

Red Reflector, Reflex, 4.38 x 1.30



Part Number	Description
0006314	Red Reflector, Reflex, 4.38 x 1.30

Lamp, Marker / Clearance, Yellow



Part Number	Description
0008713	Lamp, Marker / Clearance, Yellow

Handlight, Rechargeable, LED



Part Number	Description
0028248	Handlight, Rechargeable, LED Engineering Drawing on page 46

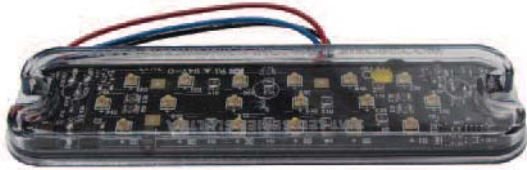
Charger, 12 VDC, Handlight



Part Number	Description
0028249	Charger, 12 VDC, Handlight

LIGHTS & ACCESSORIES

Light, Strobe, Yellow



Part Number	Description
0030440	Light, Strobe, Yellow

Assy, Strobe, LED, Yellow



Part Number	Description
0030698	Assy, Strobe, LED, Yellow

Light, Tail, LED, Turn, Stop, BU



Part Number	Description
0029584	Light, Tail, LED, Turn, Stop, BU

Light Bar, LED ID



Part Number	Description
5500-01751	Light Bar, LED ID

Amber Reflector, Reflex, 4.38 x 1.30



Part Number	Description
0029192	Amber, Reflector, Reflex, 4.38 x 1.30

Assy, Cargo LT, LED



Part Number	Description
0030622	Assy, Cargo, LT, LED

LIGHTS & ACCESSORIES

Beacon, Amber LED – 12V



Part Number	Description
5500-01847	Beacon, Amber LED – 12V

Contact, Socket, Solid #16



Part Number	Description
5500-01866	Contact, Socket, Solid #16

Light, License Kit LED



Part Number	Description
5500-01881	Light, License Kit LED

Contact, Socket, Solid #16



Part Number	Description
5500-01621	Contact, Socket, Solid #16

LED Light Bar



Part Number	Description
5500-03089	LED Light Bar

Light, Flood, LED



Part Number	Description
5500-03198	Light, Flood, LED

Light, Area, LED



Part Number	Description
5500-03213	Light, Area, LED

Plug, DT, 3 Socket



Part Number	Description
0007049	Plug, DT, 3 Socket

Pump, Hydraulic Eaton 620 Rear



Part Number	Description
0000403	Pump, Hydraulic Eaton 620 Rear

Manifold, Hydraulic Water Pump DG10



Part Number	Description
0004931	Manifold, Hydraulic Water Pump DG10

Flange Companion



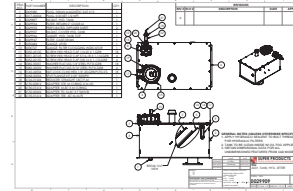
Part Number	Description
0026113	Flange Companion

Pump, Hydraulic Eaton 620 Front



Part Number	Description
0026203	Pump, Hydraulic Eaton 620 Front

Tank Assembly, Hydraulic



Part Number	Description
0029909	Tank Assembly, Hydraulic Engineering Drawing on page 46

Wldmt, Suction Tube



Part Number	Description
0029956	Wldmt, Suction Tube Engineering Drawing on page 47

Wldmt, Manifold Suction Tube



Part Number	Description
0029999	Wldmt Manifold Suction Tube

O-Ring Manifold



Part Number	Description
0030145	O-Ring Manifold

PUMPS, MOTORS & MANIFOLDS

Pump, Hydraulic 220



Part Number	Description
0032203	Pump, Hydraulic 220

Motor, Hydraulic – Eaton Delta



Part Number	Description
6000-02283	Motor, Hydraulic – Eaton Delta

Bolt, Boom BRG Lube



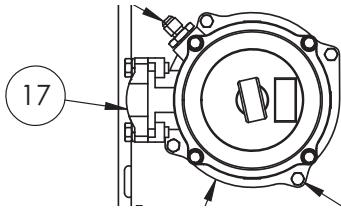
Part Number	Description
3100-00286	Bolt, Boom BRG Lube

Split Flange Kit



Part Number	Description
6068-00003	Split Flange Kit 1.00" 500P
6068-00004	Split Flange Kit 1.25" Code
6068-00005	Split Flange Kit 1.50" 3000P
6068-00006	Split Flange Kit 2.00" 3000

Filter, Return 2" Code 61



Part Number	Description
0029934	Filter, Return 2" Code 61 Engineering Drawing 0029909 on page 46

Gasket, Strainer



Part Number	Description
7350-0098	Gasket, Strainer

Strainer, 2" Line AA124-2-AL-30



Part Number	Description
20152-003	Strainer, 2" Line AA124-2-AL-30

Screen, Strainer



Part Number	Description
7350-0099	Screen, Strainer

Bowl, Strainer



Part Number	Description
7350-0097	Bowl, Strainer

HEATERS

Heat Exchanger, Water Cooled



Part Number	Description
0029416	Heat Exchanger, Water Cooled

Cabin Heater



Part Number	Description
0029624	Cabin Heater

FLUIDS: OIL

Oil Hydraulic-Premium MV. 5 Ga. Buckets



Part Number	Description
3060-00048	Oil Hydraulic-Premium MV. 5 Ga. Buckets

SENSORS

Sensor, Pressure, Water Level, Wik



Part Number	Description
0026040	Sensor, Pressure, Water Level, Wik

WATER SYSTEMS & PLUMBING

Elbow, 90°, Gruvlok 3"



Part Number	Description
0001830-00300	Elbow, 90°, Gruvlok 3"

Elbow, Drain, 90°, Gruvlok 3"



Part Number	Description
0001847-00300	Elbow, Drain, 90°, Gruvlok 3"

Tee, Short, Gruvlok 3"



Part Number	Description
0001831-00300	Tee, Short, Gruvlok 3"

Elbow, 45°, Gruvlok 3"



Part Number	Description
0001849-00300	Elbow, 45°, Gruvlok 3"

Pipe, 3" x 5.5" Schedule 10 with Gruvlok



Part Number	Description
0001844-00550	Pipe, 3" x 5.5" Schedule 10 with Gruvlok

3" Nipple, Hose X Gruvlok



Part Number	Description
0001850-00300	3" Nipple, Hose X Gruvlok

Elbow, Short Rad., 90° Gruvlok



Part Number	Description
0001845-00300	Elbow, Short Rad., 90° Gruvlok

Pipe, Gruvlok X MNPT, 3" x 3.00"



Part Number	Description
0001851-30300	Pipe, Gruvlock X MNPT, 3" x 3.00"

WATER SYSTEMS & PLUMBING

Pipe, Gruklok X MNPT, 3" x 4.75"



Part Number	Description
0001851-30475	Pipe, Gruklock X MNPT, 3" x 4.75"

Accumulator, 2.5 Gallon



Part Number	Description
0004991	Accumulator, 2.5 Gallon Standard Pressure 1500 PSI

Y-Strainer



Part Number	Description
0020239	Y-Strainer

Y-Strainer Gasket 4"



Part Number	Description
0025680	Y-Strainer Gasket 4"

Y-Strainer Screen



Part Number	Description
0026277	Y-Strainer Screen

Y-Strainer Cap



Part Number	Description
0026280	Y-Strainer Cap

Y-Strainer Clamp



Part Number	Description
0026281	Y-Strainer Clamp

Y-Strainer T-Bolt



Part Number	Description
0026283	Y-Strainer T-Bolt

Y-Strainer Basket Screen Gasket



Part Number	Description
0026279	Y-Strainer Basket Screen Gasket

Bulkhead Fitting 1.4" NPT



Part Number	Description
0026109	Bulkhead Fitting 1.4" NPT

5 Gallon Glycol Tank



Part Number	Description
0025750	5 Gallon Glycol Tank

Rubber Hump Hose Reducer



Part Number	Description
0030349	Rubber Hump Hose Reducer

Handle Bar



Part Number	Description
0031120	Handle Bar

Handle, Grab with Threaded Holes



Part Number	Description
0031133	Handle, Grab with Threaded Holes

Hose Box



Part Number	Description
0029855	Hose Box

WATER SYSTEMS & PLUMBING

Cap, with Sight Gauge Hole



Part Number	Description
24544-000	Cap, with Sight Gauge Hole

Fitting, Elbow .50" Tube x .50"



Part Number	Description
24550-000	Fitting, Elbow .50" Tube x .50"

Rubber Hump Hose 4.00"



Part Number	Description
3000-01953-0003	Rubber Hump Hose 4.00"

Hose Bumper



Part Number	Description
3000-02746	Hose Bumper

Bulkhead Fitting 1/2"



Part Number	Description
3500-00413	Bulkhead Fitting 1/2"

H.D. Polyethylene Ball – Red



Part Number	Description
3500-00426	H.D. Polyethylene Ball – Red

Tube, Poly 1/2" I.D. x 5/8" O.D.



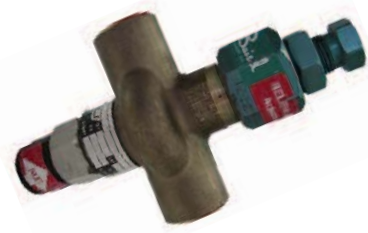
Part Number	Description
0029858	Tube, Poly 1/2" ID x 5/8" O.D.

Kanaflex Hose 2" x 30"



Part Number	Description
3906-01030	Kanaflex Hose 2" x 30"

Pressure Regulator



Part Number	Description
6000-02122	Pressure Regulator

100 GPM Piston Water Pump



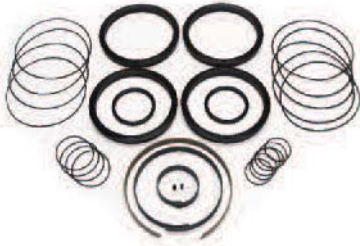
Part Number	Description
0009715	100 GPM Piston Water Pump Engineering Drawing on page 48

Inlet Valve



Part Number	Description
0026088	Inlet Valve

Seal Kit Full Re-Build



Part Number	Description
0026095	Seal Kit Full Re-Build

Outlet Valve



Part Number	Description
0026089	Outlet Valve

Seal Kit Oil End



Part Number	Description
0026094	Seal Kit Oil End

O-Ring Outlet Valve



Part Number	Description
0027247	O-Ring Outlet Valve

Seal Kit Water End



Part Number	Description
0026093	Seal Kit Water End

O-Ring Inlet Valve



Part Number	Description
0027246	O-Ring Inlet Valve

WATER PUMP PARTS

Center Block



Part Number	Description
0026096	Center Block

Main Rod



Part Number	Description
0026090	Main Rod

Manifold



Part Number	Description
0005437	Manifold

Water Piston



Part Number	Description
0026092	Water Piston

End Cap



Part Number	Description
0026098	End Cap

Oil Piston



Part Number	Description
0026091	Oil Piston

Base – Water End



Part Number	Description
0031351	Base – Water End

Oil Barrel



Part Number	Description
0026097	Oil Barrel

WATER PUMP PARTS

Water Barrel



Part Number	Description
0026785	Water Barrel

Water Pump – LVDT / Transducer



Part Number	Description
0026099	Water Pump – LVDT / Transducer

Tie Rod, 5/8" x 18



Part Number	Description
0031352	Tie Rod, 5/8" x 18

REEL ASSEMBLIES & PARTS

Chain, Roller, #60 Double – 60 PI



Part Number	Description
0004388	Chain, Rollar, #60 Double – 60 PI

Pipe TBE Schedule 80, 1.25 x 3.00



Part Number	Description
0007-00300	Pipe TBE Schedule 80, 1.25 x 3.00

Reel Inner Spacer



Part Number	Description
0004986	Reel Inner Spacer

Encoder, Reel, Hose M12



Part Number	Description
0008208	Encoder, Reel, Hose M12

REEL ASSEMBLIES & PARTS

Spacer, Billboard Rubber



Part Number	Description
0008488	Spacer, Billboard Rubber

Axle Wldmt, 800' Reel



Part Number	Description
0020287P	Axle Wldmt, 800' Reel

Bushing, HX-Red .25 x .13



Part Number	Description
0024-00001	Bushing, HX-Red .25 x .13

Arm, Pivot Reel Brake



Part Number	Description
0029494	Arm, Pivot Reel Brake

Brake Band



Part Number	Description
0029495	Brake Band

Instrument Panel



Part Number	Description
0029496	Instrument Panel

Knob, 1/2" – 13, Nylon



Part Number	Description
0029836	Knob, 1/2" – 13, Nylon

Level Wind 800' / 1000 Auto Power



Part Number	Description
0029839	Level Wind 800' / 1000 Auto Power

Engineering Drawing on page 49

REEL ASSEMBLIES & PARTS

Hose Reel Manifold Block



Part Number	Description
0029982	Hose, Reel Manifold Block

Brake Band Partial



Part Number	Description
0031095	Brake Band Partial

Tube, Stop, 1.5 x 20 Hose Reel



Part Number	Description
003802	Angle, Stop, 1.5 x 20 Hose Reel

Shim, Rubber, .125



Part Number	Description
0031201	Shim, Rubber, .125

Roller, UHMW-PE



Part Number	Description
19957-000	Roller, UHMW-PE

Plate, Latch



Part Number	Description
2010-02713	Plate, Latch

Guard, Encoder with Power Level Wind



Part Number	Description
2010-03661	Guard, Encoder with Power Level Wind

Handle, Speed Ball .50-13 NC



Part Number	Description
3000-01958-10011	Handle, Speed Ball .50-13 NC

REEL ASSEMBLIES & PARTS

Sprocket, Motor



Part Number	Description
3000-02133	Sprocket, Motor

Roller, Level Wind 2.00" x 10.75"



Part Number	Description
3000-02192	Roller, Level Wind 2.00" x 10.75"

Sprocket, Reel



Part Number	Description
3000-02134	Sprocket, Reel

Hose Bumper 0.75 – 1.05



Part Number	Description
3000-02746	Hose Bumper 0.75 – 1.05

Roller, Level Wind 2.00" x 6.25"



Part Number	Description
3000-02139	Roller, Level Wind 2.00" x 6.25"

Bearing



Part Number	Description
3000-02845	Bearing

Roller, Level Wind



Part Number	Description
3000-02189	Roller, Level Wind

Sprocket, 24 Teeth



Part Number	Description
3000-02847	Sprocket, 24 Teeth

REEL ASSEMBLIES & PARTS

Chain #40 (0.50" Pitch)



Part Number	Description
3000-02848	Chain #40 (0.50" Pitch)

Spring



Part Number	Description
3000-02849	Spring

Roller, Tensioner – Center



Part Number	Description
3000-02965	Roller, Tensioner – Center

Roller, Tensioner – End



Part Number	Description
3000-02966	Roller, Tensioner – End

Cleat



Part Number	Description
3000-03101	Cleat

Rubber Hose 2.75" x 7.00"



Part Number	Description
3498-00700	Rubber Hose 2.75" x 7.00"

Slider, Boom



Part Number	Description
3500-00668	Slider, Boom

Hydraulic Hose (R2) .50" x 600"



Part Number	Description
3616-60000	Hydraulic Hose (R2) .50" x 600"

REEL ASSEMBLIES & PARTS

Bearing, Bronze Thrust



Part Number	Description
4000-00018	Bearing, Bronze Thrust

Bearing



Part Number	Description
4000-00055	Bearing

Cam, Helical Reel Level Wind



Part Number	Description
4510-00225	Cam, Helical Reel Level Wind

Guide Rod, Level Wind



Part Number	Description
4510-00227	Guide Rod, Level Wind

Follower, Level Wind



Part Number	Description
4510-00226	Follower, Level Wind

Retainer Spring



Part Number	Description
4510-00230	Retainer Spring

Block, Traveler



Part Number	Description
4510-00251	Block, Traveler

Clevis, Piston Rod



Part Number	Description
6000-00306	Clevis, Piston Rod

REEL ASSEMBLIES & PARTS

Vent, Breather



Part Number	Description
6000-00309	Vent, Breather

Female Coupler Quick Discon. w/valve 1/2



Part Number	Description
6000-00684	Female Coupler Quick Disconnect w/valve 1/2

Retractable Hose Reel 65'



Part Number	Description
6000-01315	Retractable Hose Reel 65'

Seal Kit



Part Number	Description
7310-1933	Seal Kit for 6000-01647

Rotary Elbow



Part Number	Description
6000-01647	Rotary Elbow

Hose Guide Hinged



Part Number	Description
8510-02140	Hose Guide Hinged

Retainer, Pin



Part Number	Description
8510-02258	Retainer, Pin

Bearing Kit



Part Number	Description
7310-1934	Bearing Kit for 6000-01647

WATER TANKS

Tank, Water, 540 Gallons



Part Number	Description
0029324	Tank, Water, 540 Gallons (shown 3 tanks)

JETTER DECAL – SUPER JET 187 (Item #0031125)



JETTER DECAL - SUPER JET 187

- NOTES:
 1) DECAL SIZE RECOMMENDATION: 26" W X 8.375" H.
 2) REFER TO ARTWORK PROVIDED BY SP MARKETING DEPARTMENT.
 3) PLEASE PROVIDE PROOF BEFORE ORDERING.

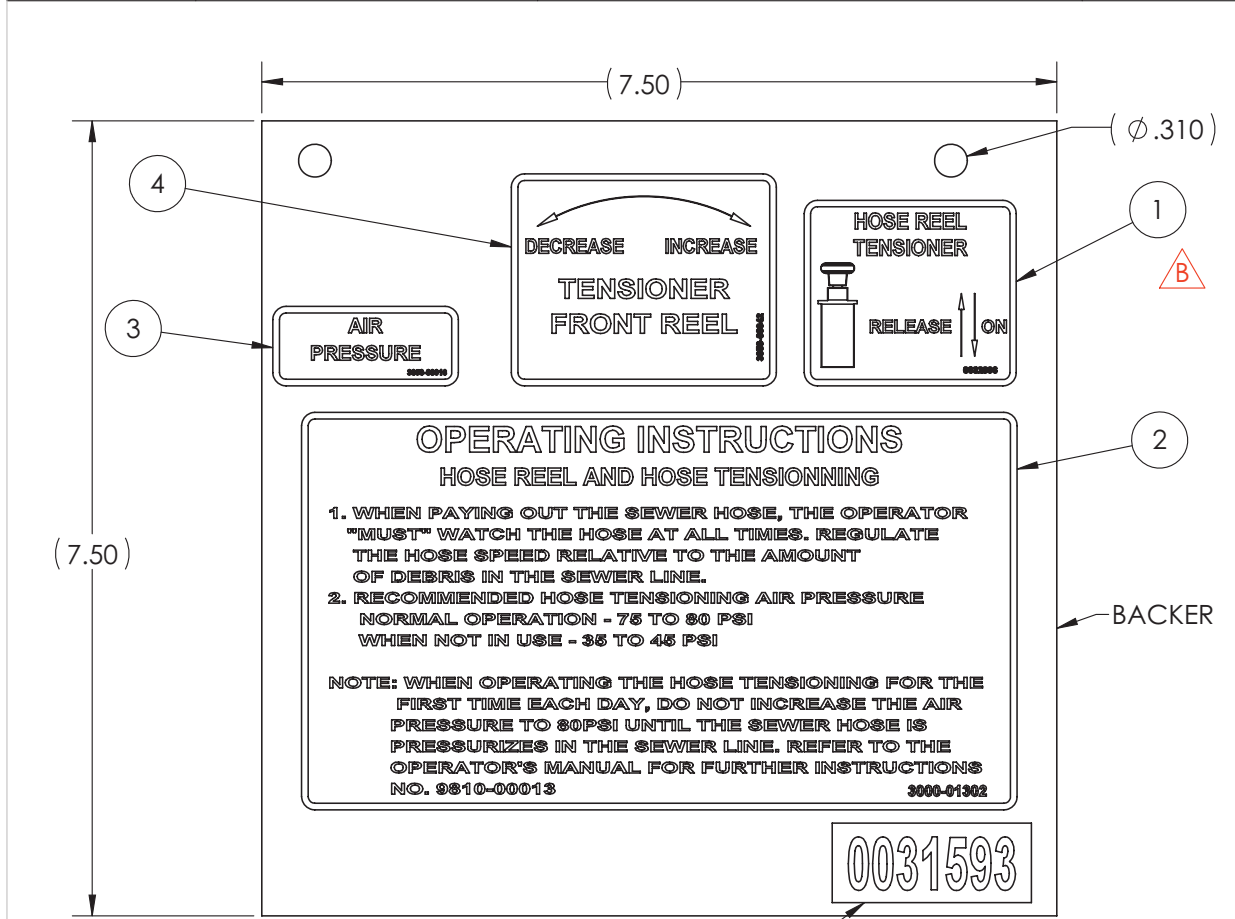
DRAWN BY A.Messing		NAME A.Messing	DATE 03/30/2017	
ENG APPR. A.Messing		03/31/2017		
MFG APPR.				
MATERIAL: ↑ (Material not specified) PROPRIETARY AND CONFIDENTIAL THE INFORMATION CONTAINED IN THIS DRAWING IS THE SOLE PROPERTY OF SUPER PRODUCTS, AND ITS REPRODUCTION IN PART OR AS A WHOLE WITHOUT THE WRITTEN PERMISSION OF SUPER PRODUCTS IS PROHIBITED.		UNLESS OTHERWISE SPECIFIED: DIMENSIONS ARE IN INCHES TOLERANCES ARE: X.X ± 0.100 X.XX ± 0.050 X.XXX ± 0.030 ANGULAR: MACH ± 1° BEND ± 2° INTERPRET GEOMETRIC TOLERANCING PER: ASME Y14.5		
DWG. NO. 0031125				REV A
SIZE B	SCALE: 1:2	WEIGHT: 0.04	SHEET 1 OF 1	

8 7 6 5 4 3 2 1

DECAL SET, TENSIONING (Item #0031593)

REVISIONS				
REV #	ECO #	DESCRIPTION	DATE	APPR
B	17785	Added Item 0032896	10/25/2017	D. King

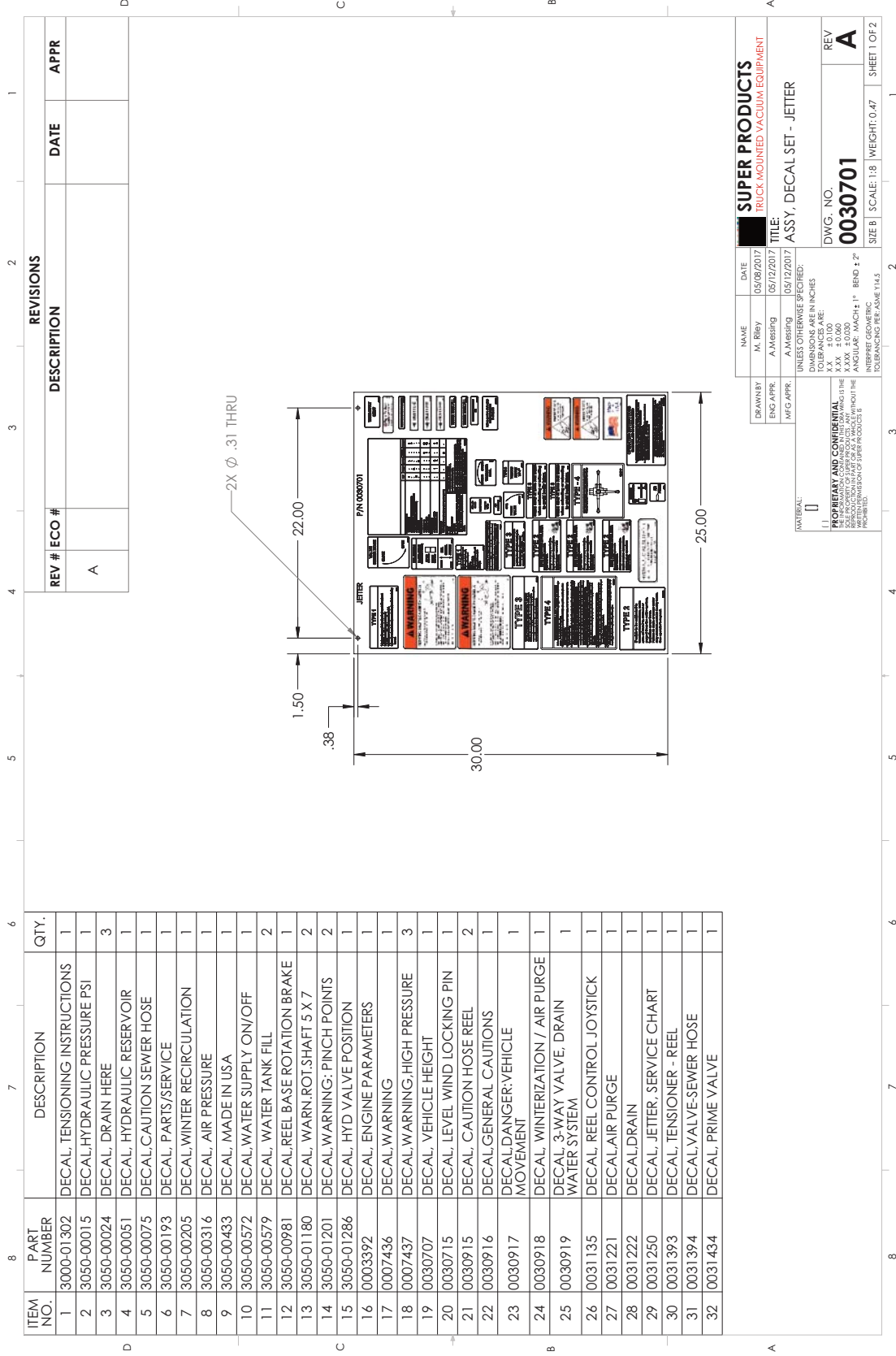
ITEM NO.	PART NUMBER	DESCRIPTION	QTY.
1	0032896 B	DECAL, TENSIONER, REEL FRONT	1
2	3000-01302	DECAL, TENSIONING INSTRUCTIONS	1
3	3050-00316	DECAL, AIR PRESSURE	1
4	3050-00942	DECAL, TENSIONER - FRONT REEL	1



S.P. PART NO. 0031593

DRAWN BY: N. Chalhoub ENG APPR.: MFG APPR.:	NAME: N. Chalhoub DATE: 04/26/2017	
MATERIAL: □ () PROPRIETARY AND CONFIDENTIAL THE INFORMATION CONTAINED IN THIS DRAWING IS THE SOLE PROPERTY OF SUPER PRODUCTS LLC. ANY REPRODUCTION IN PART OR AS A WHOLE WITHOUT THE WRITTEN PERMISSION OF SUPER PRODUCTS IS PROHIBITED.		TITLE: DECAL SET, TENSIONING
UNLESS OTHERWISE SPECIFIED: DIMENSIONS ARE IN INCHES TOLERANCES ARE: X.X ± 0.100 X.XX ± 0.060 X.XXX ± 0.030 ANGULAR: MACH ± 1° BEND ± 2° INTERPRET GEOMETRIC TOLERANCING PER: ASME Y14.5		DWG. NO. 0031593
SHEET 1 OF 1		REV B

ASSEMBLY, DECAL FULL SET (Item #0030701)



REV #	ECO #	DESCRIPTION	DATE	APPR
A				

ITEM NO.	PART NUMBER	DESCRIPTION	QTY.
1	3000-01302	DECAL, TENSIONING INSTRUCTIONS	1
2	3050-00015	DECAL, HYDRAULIC PRESSURE PSI	1
3	3050-00024	DECAL, DRAIN HERE	3
4	3050-00051	DECAL, HYDRAULIC RESERVOIR	1
5	3050-00075	DECAL, CAUTION SEWER HOSE	1
6	3050-00193	DECAL, PARTS/SERVICE	1
7	3050-00205	DECAL, WINTER RECIRCULATION	1
8	3050-00316	DECAL, AIR PRESSURE	1
9	3050-00433	DECAL, MADE IN USA	1
10	3050-00572	DECAL, WATER SUPPLY ON/OFF	1
11	3050-00579	DECAL, WATER TANK FILL	2
12	3050-00981	DECAL, REEL BASE ROTATION BRAKE	1
13	3050-01180	DECAL, WARN, ROT. SHAFT 5 X 7	2
14	3050-01201	DECAL, WARNING: PINCH POINTS	2
15	3050-01286	DECAL, HYD VALVE POSITION	1
16	0003392	DECAL, ENGINE PARAMETERS	1
17	0007436	DECAL, WARNING	1
18	0007437	DECAL, WARNING, HIGH PRESSURE	3
19	0030707	DECAL, VEHICLE HEIGHT	1
20	0030715	DECAL, LEVEL WIND LOCKING PIN	1
21	0030915	DECAL, CAUTION HOSE REEL	2
22	0030916	DECAL, GENERAL CAUTIONS	1
23	0030917	DECAL, DANGER: VEHICLE MOVEMENT	1
24	0030918	DECAL, WINTERIZATION / AIR PURGE	1
25	0030919	DECAL, 3-WAY VALVE, DRAIN WATER SYSTEM	1
26	0031135	DECAL, REEL CONTROL JOYSTICK	1
27	0031221	DECAL, AIR PURGE	1
28	0031222	DECAL, DRAIN	1
29	0031250	DECAL, JETTER, SERVICE CHART	1
30	0031393	DECAL, TENSIONER - REEL	1
31	0031394	DECAL, VALVE-SEWER HOSE	1
32	0031434	DECAL, PRIME VALVE	1

NAME	DATE	SUPER PRODUCTS
M. RIBBY	05/08/2017	TRUCK MOUNTED VACUUM EQUIPMENT
ENG APPR:	05/12/2017	TITLE:
A. MESSING	05/12/2017	ASSY, DECAL SET - JETTER
MFG APPR:		DWG. NO.
		0030701
		REV
		A

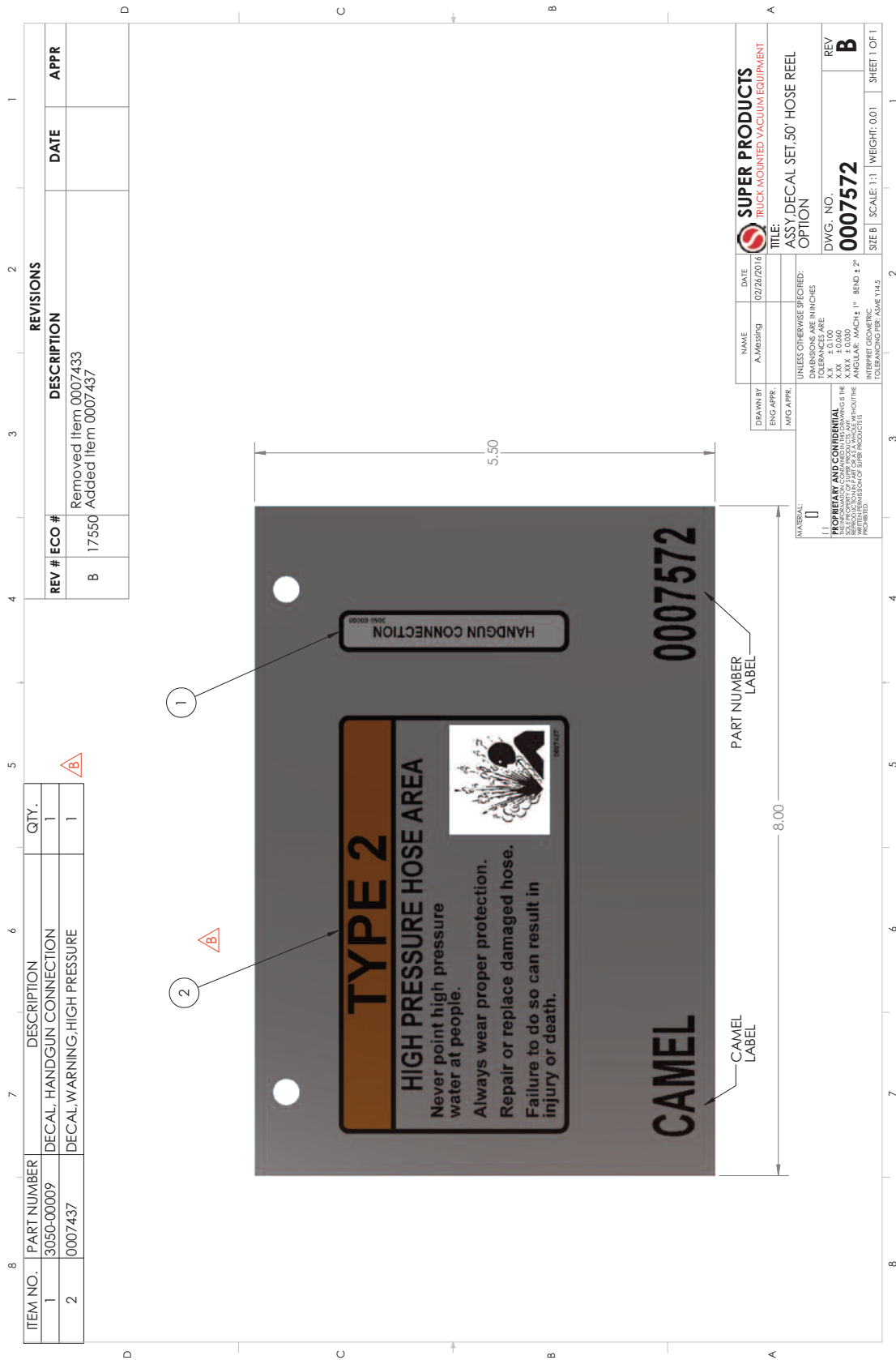
UNLESS OTHERWISE SPECIFIED:
DIMENSIONS ARE IN INCHES
TOLERANCES ARE:
XXX ±0.000
XXX ±0.000
ANGULAR: MACH 1° BEND ±2°
HOLE POSITIONING PER ASME Y14.5
TOLERANCING PER ASME Y14.5

PROPRIETARY AND CONFIDENTIAL
THIS DRAWING IS THE PROPERTY OF SUPER PRODUCTS. ANY
REPRODUCTION OR TRANSMISSION OF THIS DRAWING
WITHOUT THE WRITTEN PERMISSION OF SUPER PRODUCTS IS
PROHIBITED.

MATERIAL:
1
2

SIZE B | SCALE: 1:8 | WEIGHT: 0.47 | SHEET 1 OF 2

ASSEMBLY, DECAL SET 50' HOSE REEL OPTION (Item #007572)



PENDANTS / WIRELESS REMOTE SYSTEM

Lanyard, Retractable



Part Number	Description
0025213	Lanyard, Retractable

Receiver



Part Number	Description
0030398	Receiver

Wireless Pendant



Part Number	Description
0030403	Wireless Pendant

Wired Pendant



Part Number	Description
0030404	Wired Pendant

Wireless Pendant Assembly



Part Number	Description
0030426	Wireless Pendant Assembly

Pendant Plug



Part Number	Description
0030434	Pendant Plug

Wrist Strap



Part Number	Description
0031212	Wrist Strap

Antenna



Part Number	Description
0034412	Antenna

Charger, Wireless Pendant



Part Number	Description
0030434	Charger, Wireless Pendant

Harness, Hose Reel Encoder



Part Number	Description
0006935	Harness, Hose Reel Encoder

Harness, DOT Light, Interface



Part Number	Description
0030254	Harness, DOT Light, Interface Engineering Drawing on page 51

Camera System, 15M Cable Assembly



Part Number	Description
0008442	Camera System, 15M Cable Assembly Engineering Drawing on page 50

Joystick, J1939



Part Number	Description
0030276	Joystick, J1939

Mount, 7" Monitor



Part Number	Description
0008445	Mount, 7" Monitor

Harness, Safety Director, Rear



Part Number	Description
0030507	Harness, Safety Director, Rear

Back-Up Alarm



Part Number	Description
5500-00561	Back-Up Alarm

Harness, Safety Director, Front



Part Number	Description
0030508	Harness, Safety Director, Front

ELECTRICAL SYSTEM / HARNESS

Harness, Heater Fan



Part Number	Description
0030526	Harness, Heater Fan Engineering Drawing on page 51

Harness, Front Extension



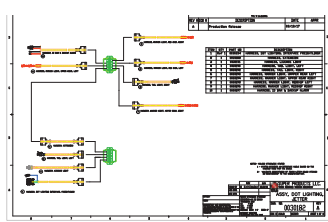
Part Number	Description
0030627	Harness, Front Extension

Harness, Extension, Safety Director



Part Number	Description
0030628	Harness, Extension, Safety Director

DOT Wiring Assembly



Part Number	Description
0030182	DOT Wiring Assembly Engineering Drawing on page 56

Assembly, Power Distribution, 1620



Part Number	Description
0030738	Assembly, Power Distribution, 1620 Engineering Drawing on page 52

Assembly, Panel, Control



Part Number	Description
0030860	Assembly, Panel, Control Engineering Drawing on page 52

Key Pad Controls, Cab



Part Number	Description
0030267	Key Pad Controls, Cab

Key Pad Controls, Reel



Part Number	Description
0030268	Key Pad Controls, Reel

BODY ASSEMBLIES

Spacer, Billboard Rubber



Part Number	Description
0008488	Spacer, Billboard Rubber

60" Roll-Up – Cabinet Door



Part Number	Description
0029422	84" Roll-Up – Cabinet Door Engineering Drawing on page 53

Screw-in Bolt Hook 1/4



Part Number	Description
0031198	Screw-in Bolt Hook 1/4

Canopy



Part Number	Description
0030042	Canopy

60" Roll-Up – Cabinet Door



Part Number	Description
0029421	60" Roll-Up – Cabinet Door Engineering Drawing on page 54

Toolbox, 18" x 18" x 20" (AL-DB)



Part Number	Description
0031813	Tool Box, 18 x 18" x 20" (AL-DB)

Toolbox, 18" x 18" x 48" (AL-DB)



Part Number	Description
3000-03062	Toolbox, 18" x 18" x 48" (AL-DB)

Toolbox, 13" x 18" x 58" (AL-DB)



Part Number	Description
0029501	Tool Box, 13" x 18" x 58" (AL-DB)

BODY ASSEMBLIES

Release Assistance, Rope Pull



Part Number	Description
0030575	Release Assistance, Rope Pull

Cone Holder Assembly



Part Number	Description
0030693	Cone Holder Assembly

24" Grab Bar Handle



Part Number	Description
0031197	24" Grab Bar Handle

Retrieving Hook



Part Number	Description
0030099	Retrieving Hook

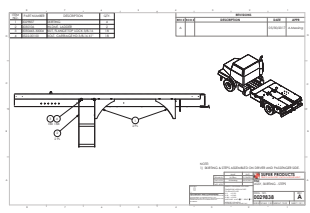
CHASSIS & POWERFRAME

Mudflap



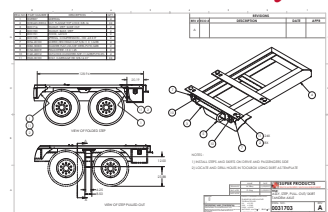
Part Number	Description
0009084	Mudflap

Assembly Skirting – Steps



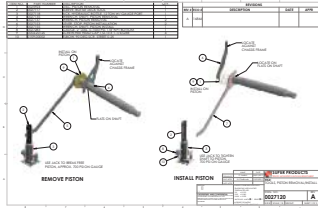
Part Number	Description
0029838	Assembly Skirting – Steps
	Engineering Drawing on page 57

Step / Skirt Tandem Assembly



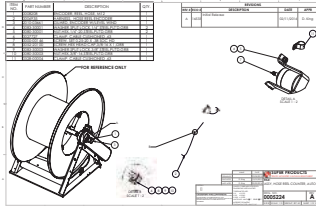
Part Number	Description
0031703	Step – Skirt Tandem Assembly
	Engineering Drawing on page 56

Tools – Piston Removal Install



Part Number	Description
0027120	Tools – Piston Removal Install Engineering Drawing on page 57

Hose Reel Counter Assembly



Part Number	Description
0005224	Hose Reel Counter Assembly Engineering Drawing on page 55

Tensioner, Front Mounted Reel



Part Number	Description
0020238	Tensioner, Front Mounted Reel Engineering Drawing on page 55

ASSEMBLY, HANDLIGHT, LED, RECH., YELLOW Item # 0031022

ITEM NO.	PART NUMBER	DESCRIPTION	QTY.
1	0027365-00100	HEX HD. MACHINE SCREW, 10-24 X 1.00	3
2	0028248	HAND LIGHT, RECHARGABLE, LED, YELLOW	1
3	0028249	CHARGER, 12VDC, HANDLIGHT	1
4	0031365	BRKT., HANDLIGHT	1
5	0050-20075	SCREW, HEX HEAD CAP, 1/4-20 X 3/4, GR8	2
6	0082-30001	WASHER, FLAT, USS, 1/4", STEEL, PLTD, GR8	4
7	0082-30022	WASHER, FLAT, USS, #10, STEEL, PLTD, GR8	3
8	0160-42005	NUT, LOCK, CLINCHED, #10-24, GR8, PLTD-STL	3
9	0160-42006	NUT, LOCK, CLINCHED, 1/4"-20, GR8, PLTD-STL	2

REV #	ECO #	DESCRIPTION	DATE	APPR
A			03/10/2017	A.Messing

PROPRIETARY AND CONFIDENTIAL

ALL INFORMATION CONTAINED HEREIN IS THE PROPERTY OF SUPER PRODUCTS, INC. WHICH IS THE PROPRIETARY AND CONFIDENTIAL INFORMATION OF SUPER PRODUCTS, INC.

UNLESS OTHERWISE SPECIFIED:

DIMENSIONS ARE IN INCHES

TOLERANCES ARE:

R.X. ± 0.100

R.X.X. ± 0.050

R.X.X.X. ± 0.030

ANGULAR: MACH 1° BEND ± 2°

INTERFER GEOMETRIC TOLERANCING PER ASME Y14.5

DRAWN BY	NAME	DATE	
ENG APPR	A.Messing	03/09/2017	
MFG APPR	A.Messing	03/10/2017	
TITLE:			ASSY., HANDLIGHT, LED, RECH., YELLOW
DWG. NO.			0031022
REV			A
SIZE B	SCALE: 1:3	WEIGHT:	SHEET 1 OF 1

ASSEMBLY, TANK HYDRAULIC JETTER Item# 0029909

ITEM NO.	PART NUMBER	DESCRIPTION	QTY.
1	0009380	PLUG, DRAIN MAGNETIC SAE #12	1
2	0017-00004	PLUG, SOCKET 1/2 NPT	1
3	0029897	WLDMT, HYD. TANK	1
4	0029934	FILTER, RETURN 2" CODE 61	1
5	0029935	PERFORATED, DIFFUSER SHEET	2
6	0029937	WLDMT, COVER HYD. TANK	1
7	0029946	GASKET, HYD. TANK TOP	1
8	0029947	FILTER, CASE DRAIN	1
9	0030484	GAUGE, LEVEL	1
10	0030727	GAUGE, FILTER CLOGGING INDICATOR	1
11	0050-20100	SCREW HEX HEAD CAP, 1/4-20 X 1, GR8	18
12	0051-20125	SCREW HEX HEAD CAP, 5/16-18 X 1-1/4, GR8	4
13	0052-20150	SCREW HEX HEAD CAP, 3/8-16 X 1-1/2, GR8	4
14	0082-30001	WASHER, FLAT, USS, 1/4", STEEL, PLTD, GR8	18
15	0082-30002	WASHER, FLAT, USS, 5/16", STEEL, PLTD, GR8	4
16	0160-42006	NUT, LOCK, CLINCHED, 1/4"-20, GR8, PLTD-STL	18
17	6068-00006	SPLIT FLANGE KIT 2.00" 3000PSI	1
18	6126-01606	REDUCER, STRAIGHT (JIC) F-M	1
19	6130-00812	ADAPTER, STR. M O-RING X M JIC	1
20	6130-01616	ADAPTER, M JIC X M O-RING	1
21	6132-00606	ADAPTER, 90, M JIC X F SWIVEL	1
22	6135-01616	ADAPTER, TEE, JIC M-M-FS	1

REV #	ECO #	DESCRIPTION	DATE	APPR
A				

PROPRIETARY AND CONFIDENTIAL

ALL INFORMATION CONTAINED HEREIN IS THE PROPERTY OF SUPER PRODUCTS, INC. WHICH IS THE PROPRIETARY AND CONFIDENTIAL INFORMATION OF SUPER PRODUCTS, INC.

UNLESS OTHERWISE SPECIFIED:

DIMENSIONS ARE IN INCHES

TOLERANCES ARE:

R.X. ± 0.100

R.X.X. ± 0.050

R.X.X.X. ± 0.030

ANGULAR: MACH 1° BEND ± 2°

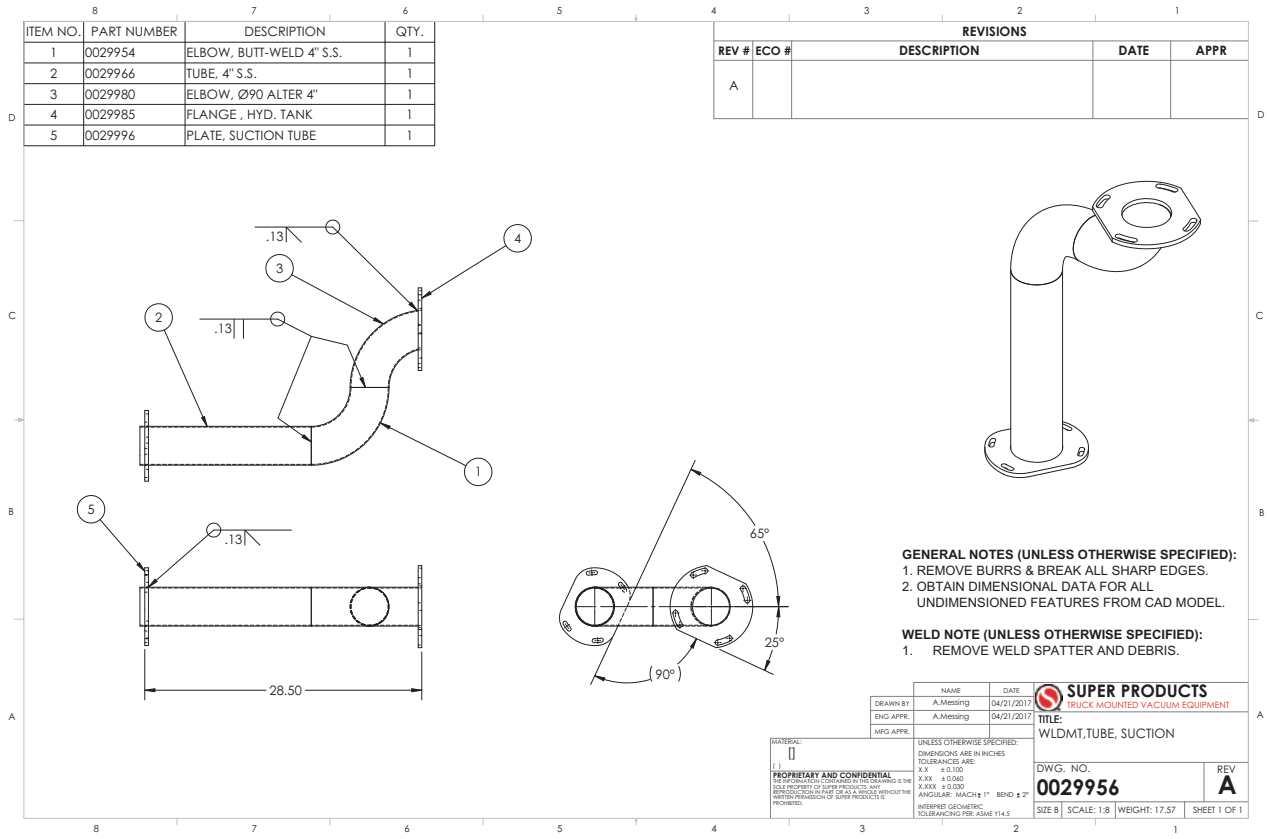
INTERFER GEOMETRIC TOLERANCING PER ASME Y14.5

GENERAL NOTES (UNLESS OTHERWISE SPECIFIED):

1. APPLY HYDRAULIC SEALANT TO BOLT THREADS FOR HYDRAULIC FILTERS.
2. TANK TO BE CLEAN INSIDE W/ OIL FOG APPLIED.
3. OBTAIN DIMENSIONAL DATA FOR ALL UNDIMENSIONED FEATURES FROM CAD MODEL.

DRAWN BY	NAME	DATE	
ENG APPR	A.Messing	03/07/2017	
MFG APPR	A.Messing	04/21/2017	
TITLE:			ASSY., TANK, HYD. JETTER
DWG. NO.			0029909
REV			A
SIZE B	SCALE: 1:8	WEIGHT: 137.67	SHEET 1 OF 1

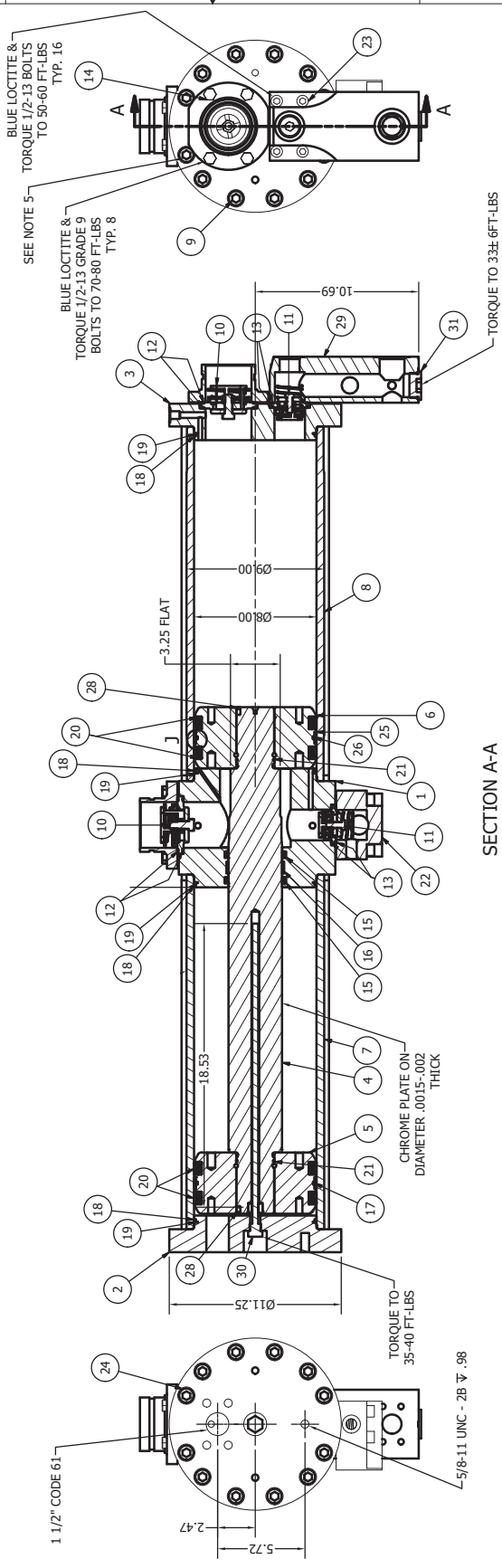
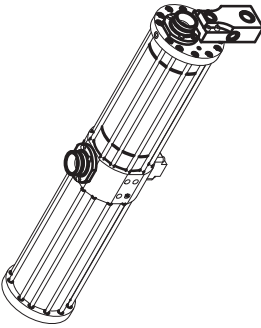
WELDED TUBE SECTION Item #0029956



PISTON PARTS Item #0009715

1		2		3		4		5		6		7		8					
ITEM	QTY	SP NUMBER	PART NUMBER	DESCRIPTION	ITEM	QTY	SP NUMBER	PART NUMBER	DESCRIPTION	ITEM	QTY	SP NUMBER	PART NUMBER	DESCRIPTION	ITEM	QTY	SP NUMBER	PART NUMBER	DESCRIPTION
1	1	0026096	4-2167	CENTER BLOCK	17	1	0027252	7-465	WEAR RING 8.00 7.75 .75	18	4	0027244	2190256	O-RING	19	4	0027245	2630210	BACK UP RING
2	1	0026098	4-2168	BASE - OIL END	18	4	0027244	2190256	O-RING	19	4	0027245	2630210	BACK UP RING	20	4	0027248	2160968	U-CUP 8.00 7.00 .825 4615-50007000-750
3	1	0031351	4-2169	BASE - WATER END	19	4	0027245	2630210	BACK UP RING	20	4	0027248	2160968	U-CUP 8.00 7.00 .825 4615-50007000-750	21	2	0027255	2190689	O-RING -141 2.50 2.31 .09 90D
4	1	0026090	1-1392	PUMP ROD SS CPO	20	4	0027248	2160968	U-CUP 8.00 7.00 .825 4615-50007000-750	21	2	0027255	2190689	O-RING -141 2.50 2.31 .09 90D	22	1	0004743	0004743	SHORT OUTLET PORT
5	1	0026091	8-1029	PISTON - OIL END	21	2	0027255	2190689	O-RING -141 2.50 2.31 .09 90D	22	1	0004743	0004743	SHORT OUTLET PORT	23	8	0031356	2220672	SHCS 1/2-13 X 3.00
6	1	0026092	8-1075	PISTON - WATER END	22	1	0004743	0004743	SHORT OUTLET PORT	23	8	0031356	2220672	SHCS 1/2-13 X 3.00	24	24	0031357	2360110	WASHER, NORD-LOCK .62/M16 DP NL
7	1	0026097	2-2161	TUBE - OIL END	23	8	0031356	2220672	SHCS 1/2-13 X 3.00	24	24	0031357	2360110	WASHER, NORD-LOCK .62/M16 DP NL	25	1	0027251	7-647	WEAR RING 8.00 7.75 .75 BRZ TEFLON
8	1	0026785	2-2162	TUBE - WATER END	24	24	0031357	2360110	WASHER, NORD-LOCK .62/M16 DP NL	25	1	0027251	7-647	WEAR RING 8.00 7.75 .75 BRZ TEFLON	26	1	0027249	49-0255	O-RING -264 7.75 7.50 .125
9	24	0031352	24-35	TIE ROD 5/8-18	25	1	0027251	7-647	WEAR RING 8.00 7.75 .75 BRZ TEFLON	26	1	0027249	49-0255	O-RING -264 7.75 7.50 .125	27	2	0031358	43-410	INLET VALVE PORT
10	2	0026088	802-226	OUTLET VALVE	26	1	0027249	49-0255	O-RING -264 7.75 7.50 .125	27	2	0031358	43-410	INLET VALVE PORT	28	2	0027230	2220025	SET SCREW .25-20X.5
11	2	0026089	802-227	OUTLET VALVE	27	2	0031358	43-410	INLET VALVE PORT	28	2	0027230	2220025	SET SCREW .25-20X.5	29	1	0005437	0005437	MANIFOLD, WATER PUMP
12	4	0027246	2190119	O-RING 3.44 3.25 .093 70D	28	2	0027230	2220025	SET SCREW .25-20X.5	29	1	0005437	0005437	MANIFOLD, WATER PUMP	30	1	0026099	2050011	LAE LINEAR TRANSDUCER
13	4	0027247	2190685	O-RING 2.38 2.19 .093 70D	29	1	0005437	0005437	MANIFOLD, WATER PUMP	30	1	0026099	2050011	LAE LINEAR TRANSDUCER	31	1	0031360	2470303	20 HP50M SAE ORB PLUG
14	8	0031353	2220133	HEX HEAD 1/2-13 X 1.5 GRADE 9	30	1	0026099	2050011	LAE LINEAR TRANSDUCER	31	1	0031360	2470303	20 HP50M SAE ORB PLUG					
15	2	0027254	KR350	ROD SEAL	31	1	0031360	2470303	20 HP50M SAE ORB PLUG										
16	1	0027253	7-607	WEAR RING															

PISTON SEAL KITS:
 WATER SIDE: 0026093
 OIL SIDE: 0026094



SUPER PRODUCTS LLC.
 STOCK MOUNTED VACUUM EQUIPMENT

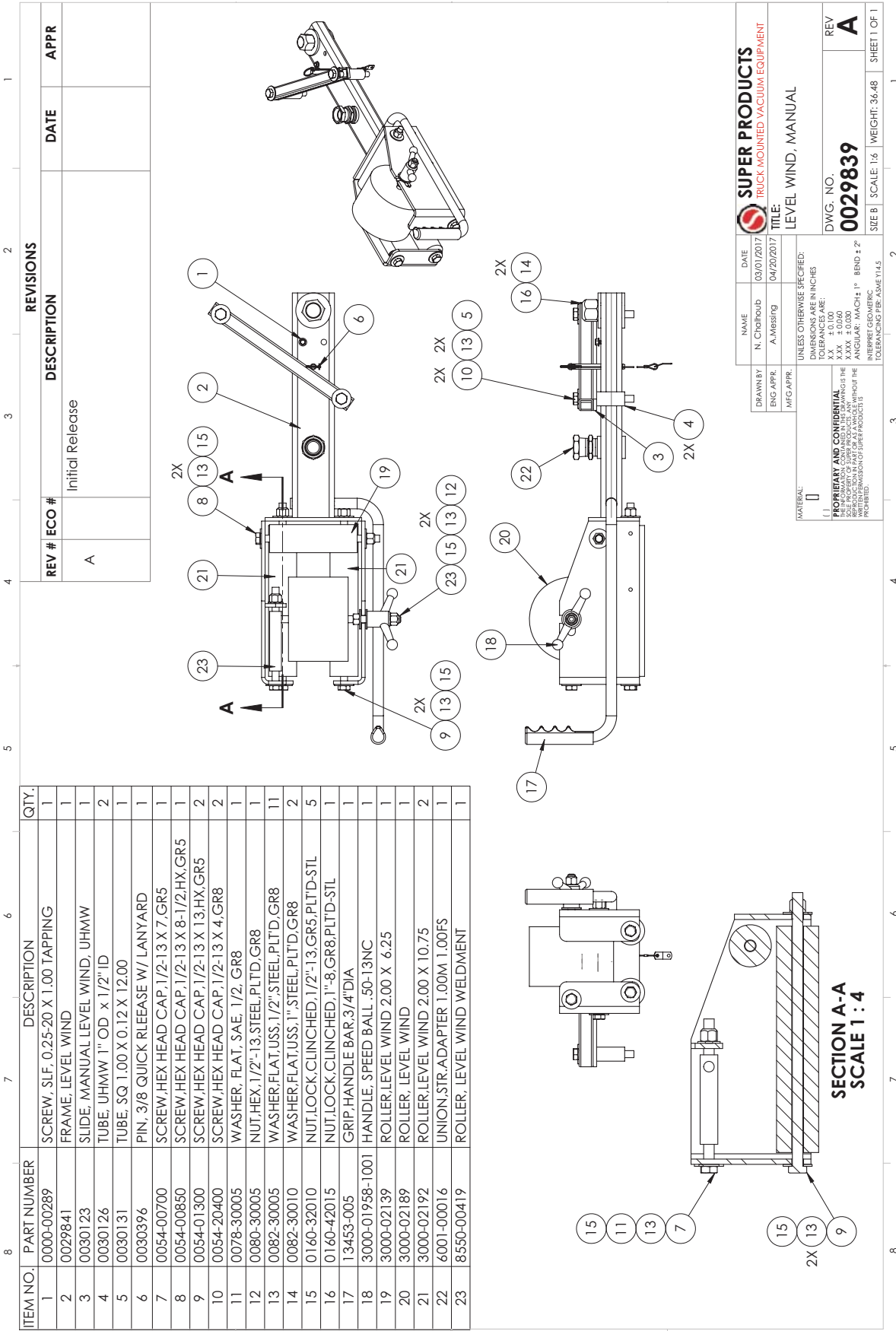
NAME: _____ DATE: _____
 DRAWN BY: _____
 CHECKED BY: _____
 DATE: _____

UNLESS OTHERWISE SPECIFIED:
 DIMENSIONS ARE IN INCHES
 DECIMALS TO 0.0005
 FRACTIONS TO 1/32
 ANGULAR TO 1' 30"

MATERIAL: _____
 FINISH: _____

PROPERTY AND CONFIDENTIALITY NOTICE:
 THE INFORMATION CONTAINED HEREIN IS THE PROPERTY OF SUPER PRODUCTS LLC. ANY REPRODUCTION IN PART OR WHOLE WITHOUT THE WRITTEN PERMISSION OF SUPER PRODUCTS LLC IS PROHIBITED. TELEPHONE: 800-837-9711

DWG. NO.: **0009715 PARTS**
 SHEET 2 OF 1

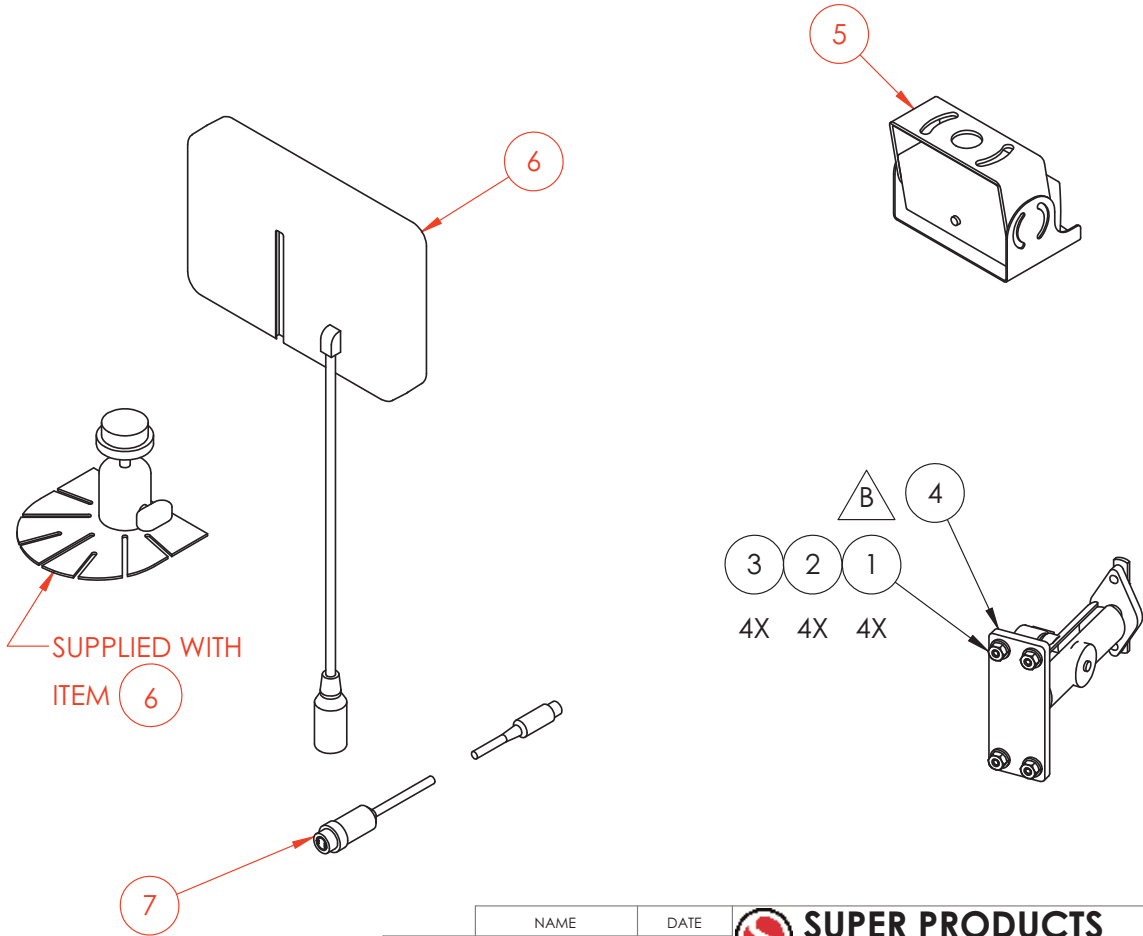


NAME	DATE		SUPER PRODUCTS TRUCK MOUNTED VACUUM EQUIPMENT
DRAWN BY	03/01/2017		
ENG APPR.	04/20/2017		
MFG APPR.		TITLE: LEVEL WIND, MANUAL	
UNLESS OTHERWISE SPECIFIED:			
DIMENSIONS ARE IN INCHES:			
TOLERANCES ARE:			
X.X. ±0.100			
X.XX ±0.050			
X.XXX ±0.030			
ANGULAR: MACH ±1° BEND ±2°			
INTERPRET GEOMETRIC TOLERANCING PER ASME Y14.5			
TOLERANCING PER ASME Y14.5			
DWG. NO.		REV	
0029839		A	
SIZE	SCALE	WEIGHT	SHEET 1 OF 1
1:6	1:6	36.48	1

ASSEMBLY, CAMERA SYSTEM, 15 METER CABLE Item # 0008442

REVISIONS				
REV #	ECO #	DESCRIPTION	DATE	APPR
B	17628	ADDED: 0008445, MOUNT, 7" MONITOR, 0156-00047 (4), 0083-00016 (4), 0080-00016 (4)	05/23/2017	N. Chalhoub

ITEM NO.	PART NUMBER	DESCRIPTION	QTY.
1	0080-00016	NUT,HEX,#10-24,STEEL,PLT'D	4
2	0083-00016	WASHER,SPLIT LOCK,#10,STEEL,PLT'D	4
3	0156-00047	SCREW MCH #10-24 X 0.50 PLTD	4
4	0008445	MOUNT, 7" MONITOR	1
5	0028543	CAMERA, BACKUP	1
6	0028545	MONITOR, 7", COLOR	1
7	0028553	CABLE, CAMERA, 15 METER	1



SUPPLIED WITH
ITEM 6

	NAME	DATE
DRAWN BY	C. Ladish	02/08/2016
ENG APPR.	D. King	02/11/2016
MFG APPR.	D. King	02/11/2016

SUPER PRODUCTS
TRUCK MOUNTED VACUUM EQUIPMENT

TITLE:
ASSY, CAMERA SYSTEM, 15 METER
CABLE

MATERIAL:
□
()
PROPRIETARY AND CONFIDENTIAL
THE INFORMATION CONTAINED IN THIS
DRAWING IS THE SOLE PROPERTY OF SUPER
PRODUCTS LLC.. ANY REPRODUCTION IN PART
OR AS A WHOLE WITHOUT THE WRITTEN
PERMISSION OF SUPER PRODUCTS IS PROHIBITED.

UNLESS OTHERWISE SPECIFIED:
DIMENSIONS ARE IN INCHES
TOLERANCES ARE:
X.X ± 0.100
X.XX ± 0.060
X.XXX ± 0.030
ANGULAR: MACH ± 1° BEND ± 2°
INTERPRET GEOMETRIC
TOLERANCING PER: ASME Y14.5

DWG. NO. 0008442	REV B		
SIZE A	SCALE:1:96	WEIGHT:	SHEET 1 OF 1

HARNESS, DOT LIGHTING, INTERFACE, FREIGHTLINER Item #0030254

SUPER JET

ITEM	QTY	PART NO	DESCRIPTION
1	1	5500-03231	CONNECTOR, SP, METRI-PACK 280
2	5	0026237	TERMINAL, MALE, SEALED, 18-16 AWG, METRI-280
3	6	5500-01286-0019	SEAL, GRAY, 16-14 AWG
4	1	5500-03232	TPA, 5 POSITION, METRI-PACK 280
5	1	5500-01286-0001	CONNECTOR BODY, TOWER, 1-WAY
6	1	5500-01286-0014	TERMINAL, FEMALE, 16-14 AWG
7	2	5500-00103	DIODE, 3 AMP, 1000 VOLT
8	5	5683-00002	BUTT SPLICE, 16-14 AWG
9	2	0008281	HEAT SHRINK, SEALING, 0.375, 4"
10	1	0007493	CONNECTOR KIT, DOT LIGHTING, 1/2"
11	5	0007496	TERMINAL, DOT LIGHTING, 16-14AWG
12	60in	5503-00000	CABLE, SEDDW, 16-5
13	6	0007496	TERMINAL, DOT LIGHTING, 16-14AWG
14	1	0009125	WIRE, GPT, 16 AWG BLUE, 8" LG
15	58in	0004346	LOOM, SPLIT, NYLON, 3/8"

REV #	ECD #	DESCRIPTION	DATE	APPR
A		Updated length, Production release	03/14/17	

WIRING SCHEMATIC

NOTE: UNLESS OTHERWISE STATED

- THIS HARNESS MATES TO A FREIGHTLINER CHASSIS HAVING A 5-WAY DELPHI LIGHTING INTERFACE CONNECTOR, DATA CODE 294-090.
- CONNECTOR END VIEWS ARE SHOWN FROM THE CABLE INSERTION END.
- AFFIX LABEL TO HARNESS, WITH INCHES OF END AS SHOWN ON SHEET 2. IDENTIFYING PART NUMBER AND REVISION LETTER OF HARNESS.
- WRAP ENDS OF SPLIT LOOM WITH ELECTRICAL TAPE, AND WRAP LOOM EVERY 4 TO 6 INCHES TO SECURE WIRES WITHIN THE LOOM.
- SOLDER DIODE TO CONDUCTORS ACCORDING TO SCHEMATIC SHOWN THIS PAGE. COVER AND SEAL WITH SEALING HEAT SHRINK AS SHOWN IN DETAIL B, THIS PAGE.
- DIODES BUTT SPLICE LOCATION.
- INSTALL ZIP TIES TO HAVE CLIPS INSTALLED ON OPPOSITE SIDES OF CONNECTOR BODY.

DRAWN BY	M. Schieder	DATE	09/14/16	
ENG. APPR.				
TITLE				HARNESS, DOT LIGHTING, INTERFACE, FREIGHTLINER, JETTER
DWG. NO.				
REV				A

HARNESS, HEATER FAN, JETTER Item# 0030526

REV #	ECD #	DESCRIPTION	DATE	APPR
A		Production release	03/16/17	

ELECTRICAL SCHEMATIC

POS	CODE	GAUGE	COLOR
A	HTR FAN HIGH	14AWG	ORANGE
B	HTR FAN LOW	14AWG	RED
C	GND	14AWG	BLACK

DRAWN BY	M. Schieder	DATE	10/10/16	
ENG. APPR.				
TITLE				HARNESS, HEATER FAN, JETTER
DWG. NO.				
REV				A

ASSEMBLY, POWER DISTRIBUTION Item# 0030738

ITEM	QTY	PART NO	DESCRIPTION
1	1	0029630	FUSE HOLDER, BATTERY TERMINAL, 1/8 STUD
2	1	0029631	COVER, RED, FUSE HOLDER
3	1	0029941	FUSE, TYPE MRBF, 100 AMP
4	3	0005964	HEAT SHRINK, 1in
5	1	0005962	FERRULE, 1/0
6	1	0006978	LUG, BATTERY 1/0, 3/8 STUD, TIN
7	See Sheet 2	5672-00000	ASSY, CABLE, BATT, 1/0, RED
8	See Sheet 2	5501-00000	ASSY, CABLE, BATT, 1/0, BLACK
9	See Sheet 2	5715-00000	L0DM, SPLIT, 1/2ID
10	See Sheet 2	5715-00000	L0DM, SPLIT, 1/2ID
11	1	0029938	LUG, BATTERY 1/0, 3/8 STUD, TIN
12	1	0031132	LUG, BATTERY, 1/0, 3/8 STUD, TIN

REV #	ECO #	DESCRIPTION	DATE	APPR
A	-	Production release	03/16/17	-

NAME: M Schlieder DATE: 10/31/16 DRAWN BY: M Schlieder ENG APPR: MFG APPR:	SUPER PRODUCTS LLC. TRUCK MOUNTED VACUUM EQUIPMENT TITLE: ASSY, PWR DIST, SUPERJET DWG. NO. 0030738 REV A
--	--

MATERIAL: UNLESS OTHERWISE SPECIFIED:	
DIMENSIONS ARE IN INCHES	
TOLERANCES ARE:	
XX	+0.030
XXX	+0.050
XXXX	+0.050
ANGULAR	MACH ± 2° BEND ± 2°
INTERPRET GEOMETRIC TOLERANCING PER ASME Y14.5	

ASSEMBLY, PANEL, CONTROL, JETTER Item# 0030860

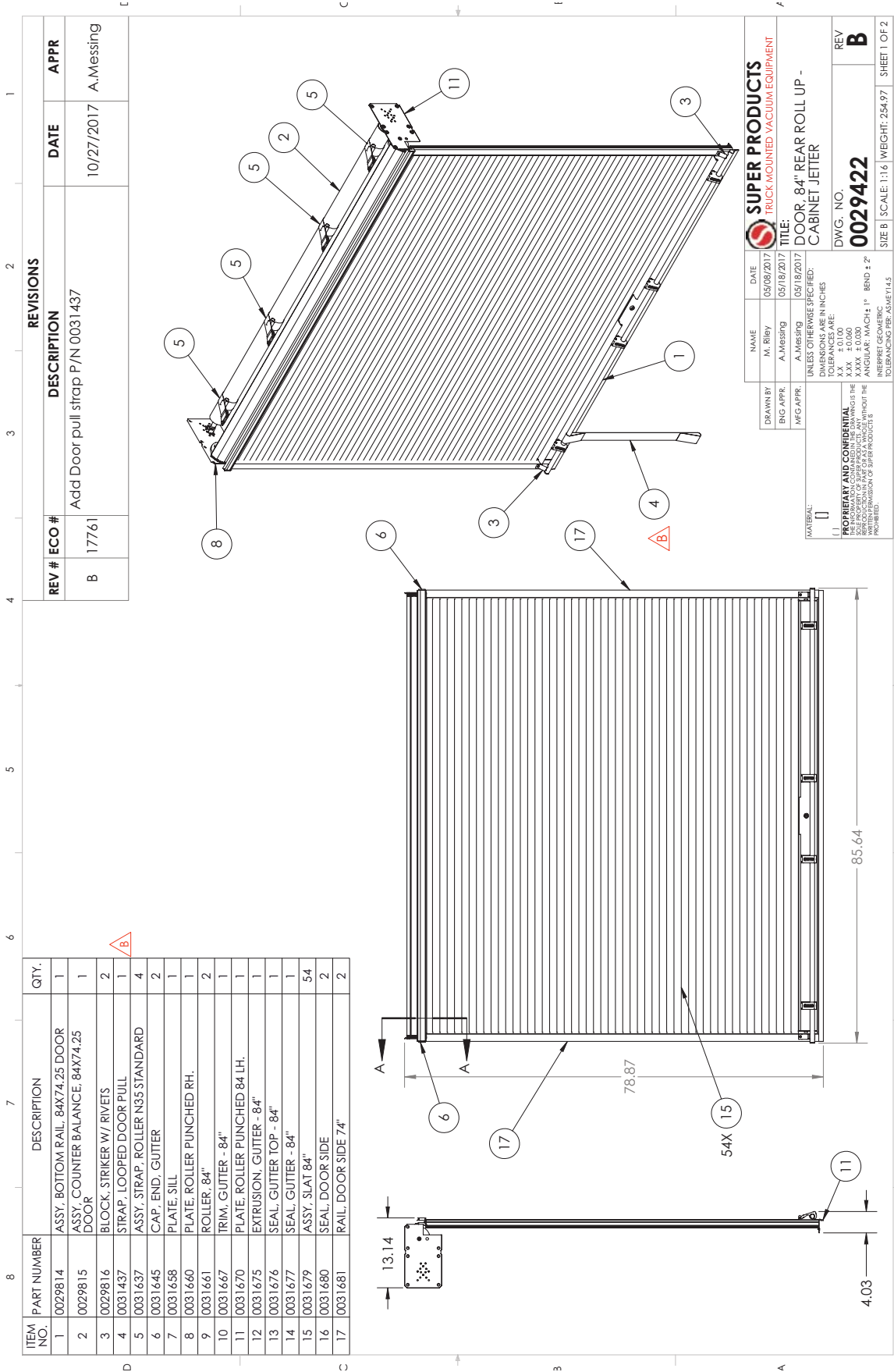
ITEM NO.	PART NUMBER	DESCRIPTION	QTY.
1	0030116	CONTROLLER, HMI DISPLAY	1
2	0030268	KEYPAD, JETTER, CONTROL PANEL	1
3	0030312	GASKET, SONALERT ALARM	1
4	0030315	BRACKET, MOUNTING DISPLAY	1
5	0030342	DECAL, CONTROL PANEL	1
6	0030351	KNOB, POTENTIOMETER	1
7	0030590	GASKET, SOCKET CONNECTOR	1
8	0030859	ALTER, ENCLOSURE CONTROL PANEL	1
9	0031242	ASSY, POTENTIOMETER	1
10	0031243	ASSY, PENDANT SOCKET	1
11	0031244	ASSY, PANEL LIGHT	2
12	0031245	ASSY, ALARM BUZZER	1
13	0031246	HARNES, CONTROL PANEL, JETTER	1
14	5500-01740	SWITCH, E-STOP	1

REV #	ECO #	DESCRIPTION	DATE	APPR
A		INITIAL RELEASE.		

NAME: A.Messing DATE: 03/17/2017 DRAWN BY: A.Messing ENG APPR: A.Messing MFG APPR:	SUPER PRODUCTS TRUCK MOUNTED VACUUM EQUIPMENT TITLE: ASSY, PANEL CONTROL, JETTER DWG. NO. 0030860 REV A
--	--

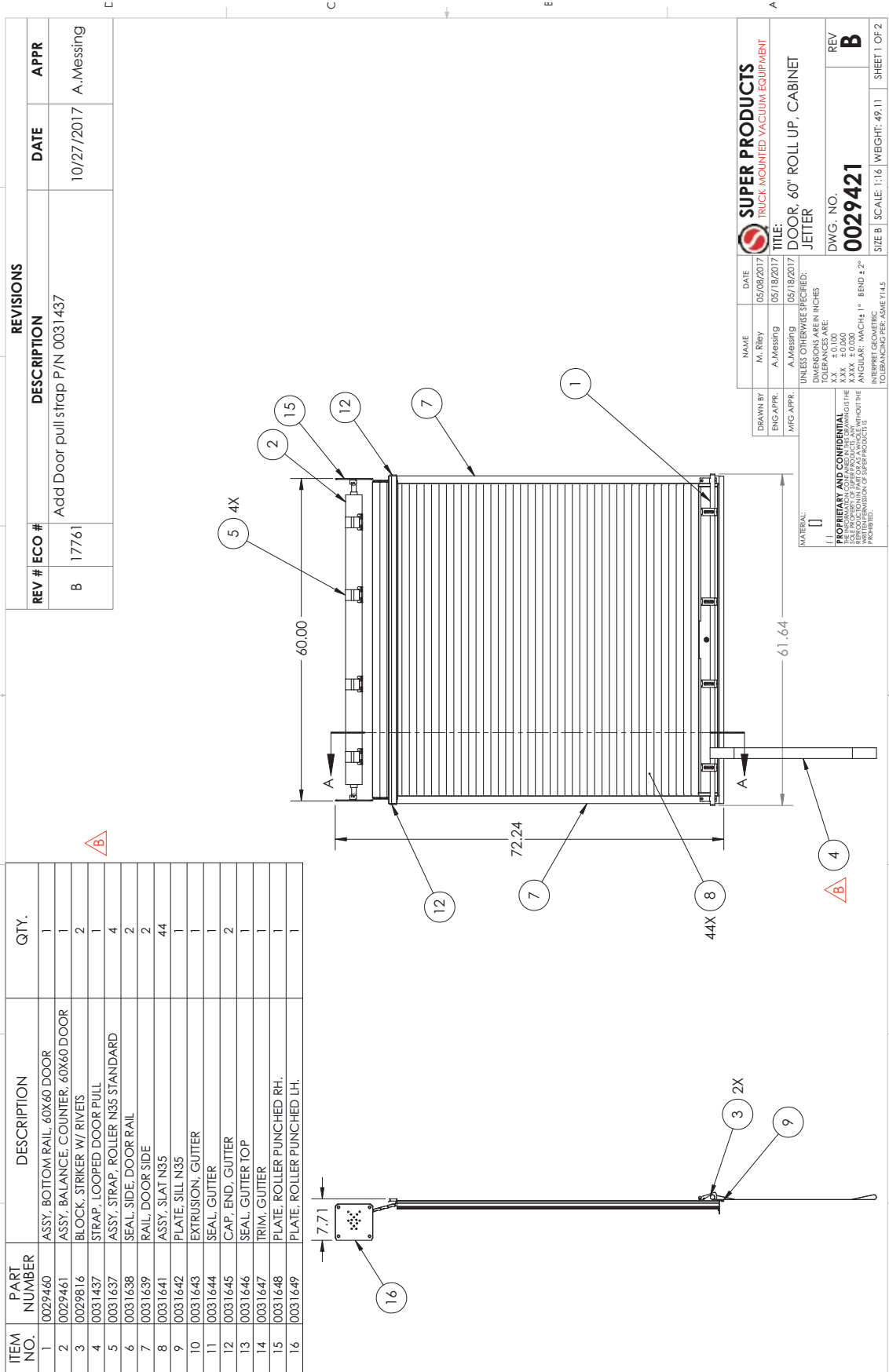
MATERIAL: UNLESS OTHERWISE SPECIFIED:	
DIMENSIONS ARE IN INCHES	
TOLERANCES ARE:	
XX	+0.100
XXX	+0.050
XXXX	+0.050
ANGULAR	MACH ± 1° BEND ± 2°
INTERPRET GEOMETRIC TOLERANCING PER ASME Y14.5	

DOOR, 84" REAR ROLL-UP CABINET JETTER Item #0029422



NAME	M. Riley
DATE	05/08/2017
DRAWN BY	A. Messing
ENG. APPR.	A. Messing
MFG APPR.	
TITLE	DOOR, 84" REAR ROLL UP - CABINET JETTER
DATE	05/18/2017
DIMENSIONS ARE IN INCHES TOLERANCES ARE: X.X ± 0.100 X.XX ± 0.050 X.XXX ± 0.030 ANGULAR: MACH: 1° INTERPRET GEOMETRIC TOLERANCING PER ASME Y14.5	
DWG. NO.	0029422
REV	B
SIZE B SCALE: 1:1.5 WEIGHT: 254.97 SHEET 1 OF 2	

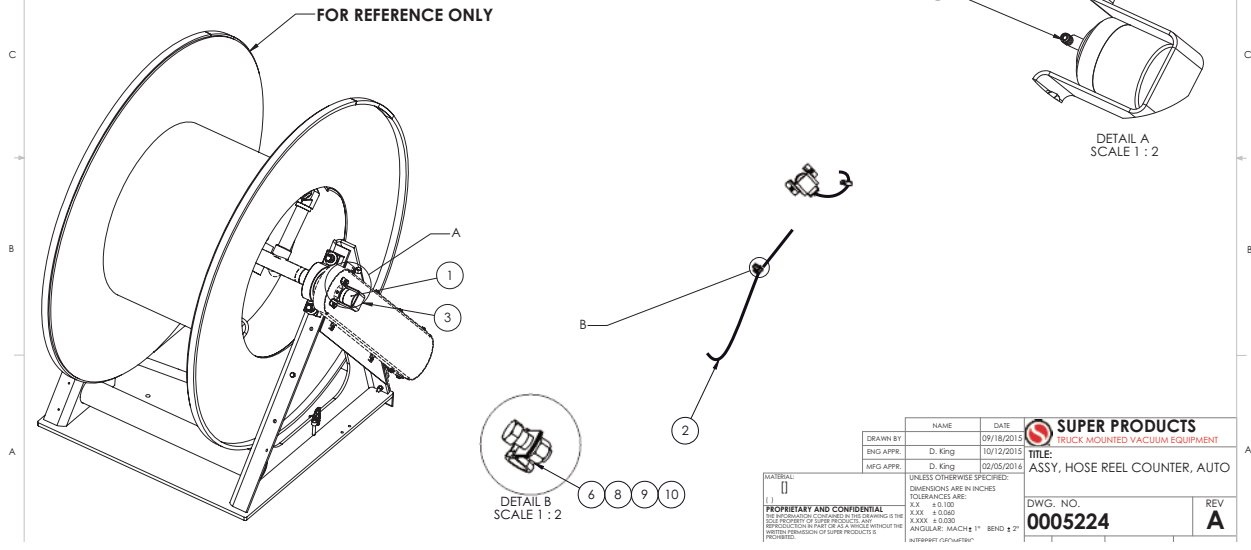
DOOR, 60" REAR ROLL-UP, CABINET JETTER Item #0029421



ASSEMBLY, HOSE REEL, COUNTER, AUTO Item #0005224

ITEM NO.	PART NUMBER	DESCRIPTION	QTY.
1	0008208	ENCODER, REEL, HOSE, M12	1
2	0006935	HARNNESS, HOSE REEL ENCODER	1
3	2010-03661	GUARD, ENCODER W/LEVEL WIND	1
4	0083-30001	WASHER, SPLIT LOCK, 1/4", STEEL, PLTD, GR8	2
5	0080-30001	NUT, HEX, 1/4"-20, STEEL, PLTD, GR8	2
6	0027727	CLAMP, CABLE CUSHIONED .63	1
7	0000-00146	SCREW, SET 0.25-20 X .38 SOC HD	1
8	0052-20100	SCREW, HEX HEAD CAP, 3/8-16 X 1, GR8	1
9	0083-30003	WASHER, SPLIT LOCK, 3/8", STEEL, PLTD, GR8	1
10	0080-30003	NUT, HEX, 3/8"-16, STEEL, PLTD, GR8	1
11	0328-00004	CLAMP, CABLE CUSHIONED .63	1

REVISIONS				
REV #	ECO #	DESCRIPTION	DATE	APPR
A	16533	Initial Release	02/11/2016	D. King

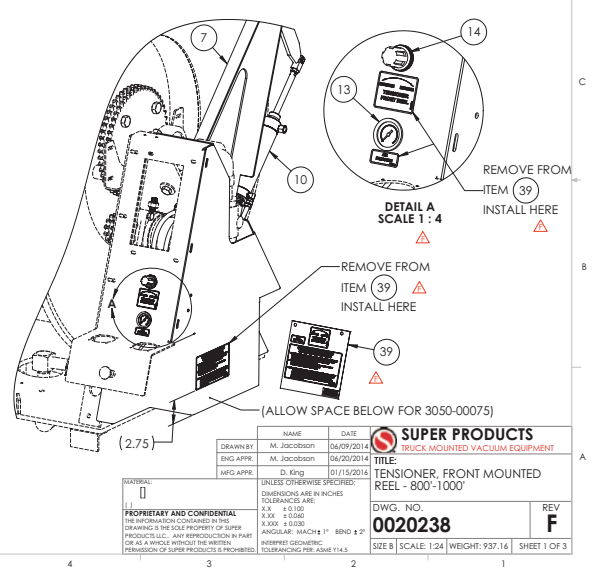


NAME	DATE	 TRUCK MOUNTED VACUUM EQUIPMENT
DRAWN BY	09/18/2015	
ENG APPR	D. King 10/12/2015	
MFG APPR	D. King 02/05/2016	
UNLESS OTHERWISE SPECIFIED:		
DIMENSIONS ARE IN INCHES		
TOLERANCES ARE:		
XXX ± 0.100		
XX ± 0.050		
X ± 0.020		
ANGULAR: MACH ± 1° BEND ± 2°		
INTERSECT: C/F UNIFORM		
DWG. NO.		REV
0005224		A

TENSIONER, FRONT MOUNTED REEL - 800'-1000' Item# 0020238

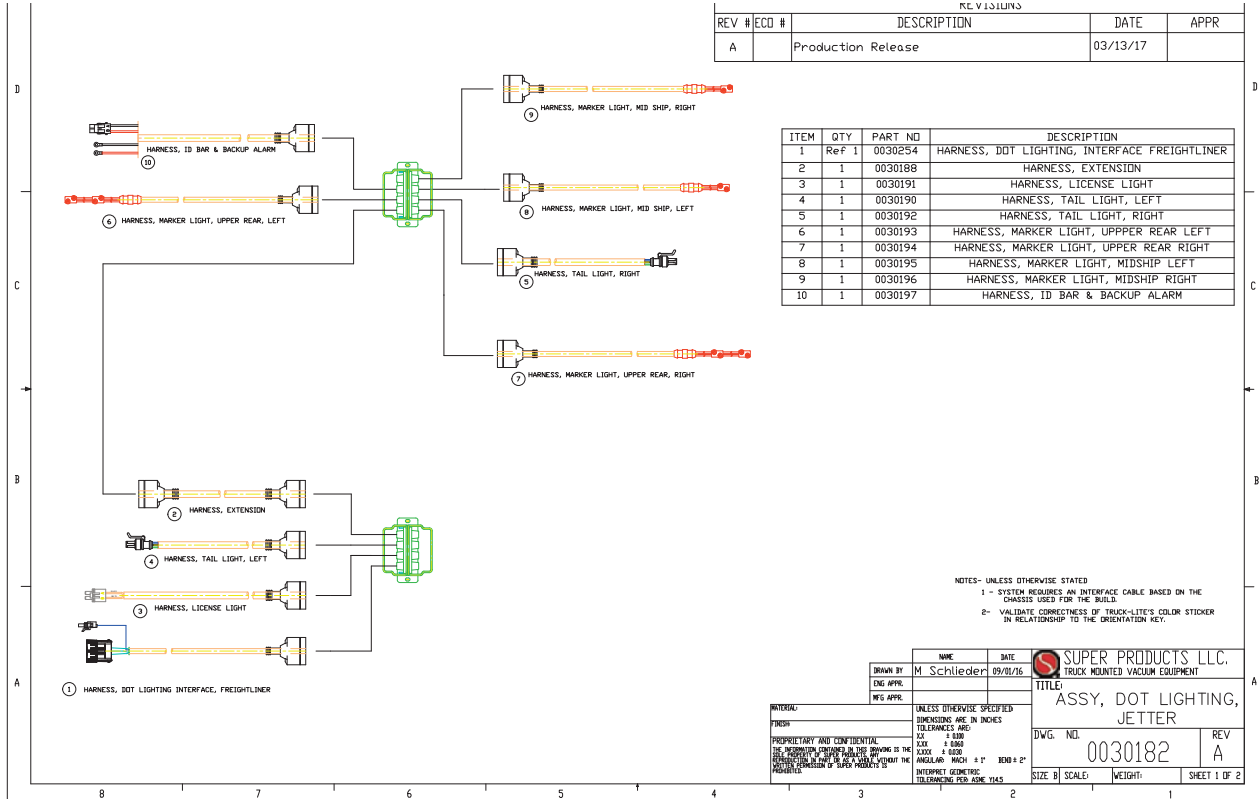
ITEM NO.	PART NUMBER	DESCRIPTION	QTY.
1	8510-02340	TENSION ARM	1
2	3000-02965	ROLLER, TENSIONER - CENTER	1
3	3000-02966	ROLLER, TENSIONER - END	2
4	8510-02383	AXLE, TENSIONER - PRESSURE	1
5	0078-30008	WASHER, FLAT, SAE, 3/4", GR8	10
6	8510-02384	AXLE, TENSIONER - PIVOT	1
7	0020192	BRACE, TENSIONER - MOTOR SIDE	1
8	0020196	BRACE, CYL - TENSIONER - MOTOR SIDE	1
9	0020197	BRACE, CYL - TENSIONER NON MOTOR SIDE	1
10	6000-02285	CYL, PNEUMATIC, Ø2.00 BORE - 6.0 STROKE	2
11	0020187	BRACE, TENSIONER - NON MOTOR SIDE	1
12	6000-00310	VENT, BREATHER 1/4 NPT	2
13	0020256	GAUGE, PRESSURE 0-160 PSI	1
14	6000-01975	AIR REGULATOR - 1/4 NPT	1
15	6003-00003	UNION, 90° ADAPTER 1/4 (M) X 1/4 (FS)	2
16	6010-00002	NIPPLE, HOSE MALE .25 NPT X .25	5
17	0020242	HOSE, REG. TO PRES. GAUGE	1
18	0020245	HOSE, CYLINDER TO REGULATOR	1
19	0020247	HOSE, CYLINDER TO REGULATOR - MOTOR SIDE	1
20	6000-00306	CLEVIS, PISTON ROD	2
21	0082-30003	WASHER, FLAT, USS, 3/8" STEEL, PLTD, GR8	4
22	0080-30001	NUT, HEX, 1/4"-20, STEEL, PLTD, GR8	7
23	0080-30003	NUT, HEX, 3/8"-16, STEEL, PLTD, GR8	6
24	0020257	HOSE, 4 WAY TO REGULATOR	1
25	6078-00003	TEE, STREET 1/4" NPT	1
26	0050-20075	SCREW, HEX HEAD CAP, 1/4-20 X 3/4, GR8	7
27	0160-42013	NUT, LOCK, CLINCHED, 3/4"-10, GR8, PLTD-STL	2
28	0052-20175	SCREW, HEX HEAD CAP, 3/8-16 X 1-3/4, GR8	2
29	0052-20150	SCREW, HEX HEAD CAP, 3/8-16 X 1-1/2, GR8	6
30	0160-42008	NUT, LOCK, CLINCHED, 3/8"-16, GR8, PLTD-STL	2
31	6048-00001	STREET TEE BRASS .13	1
32	6026-00005	ELBOW, 90° STR. ADAPTER .13"	2
33	6010-00001	NIPPLE, HOSE MALE 1/8 NPT X 1/4	3
34	0027498	CABLE TIE WRAP, 24.5"	4
35	6047-00001	ELBOW, 90 DEG, BRASS .13	1
36	6026-00001	ELBOW, 90 DEG, STREET ADAPT. .25	2
37	0027727	CLAMP, CABLE CUSHIONED .63	2
38	0328-00010	CLAMP, CABLE CUSHIONED .1.75	1
39	0031593	DECAL SET, TENSIONING	1

REVISIONS				
REV #	ECO #	DESCRIPTION	DATE	APPR
F	17625	ADDED: DECAL SET 0031593, DETAIL A, VIEW, (2.75), NOTES ON SHT. 1		

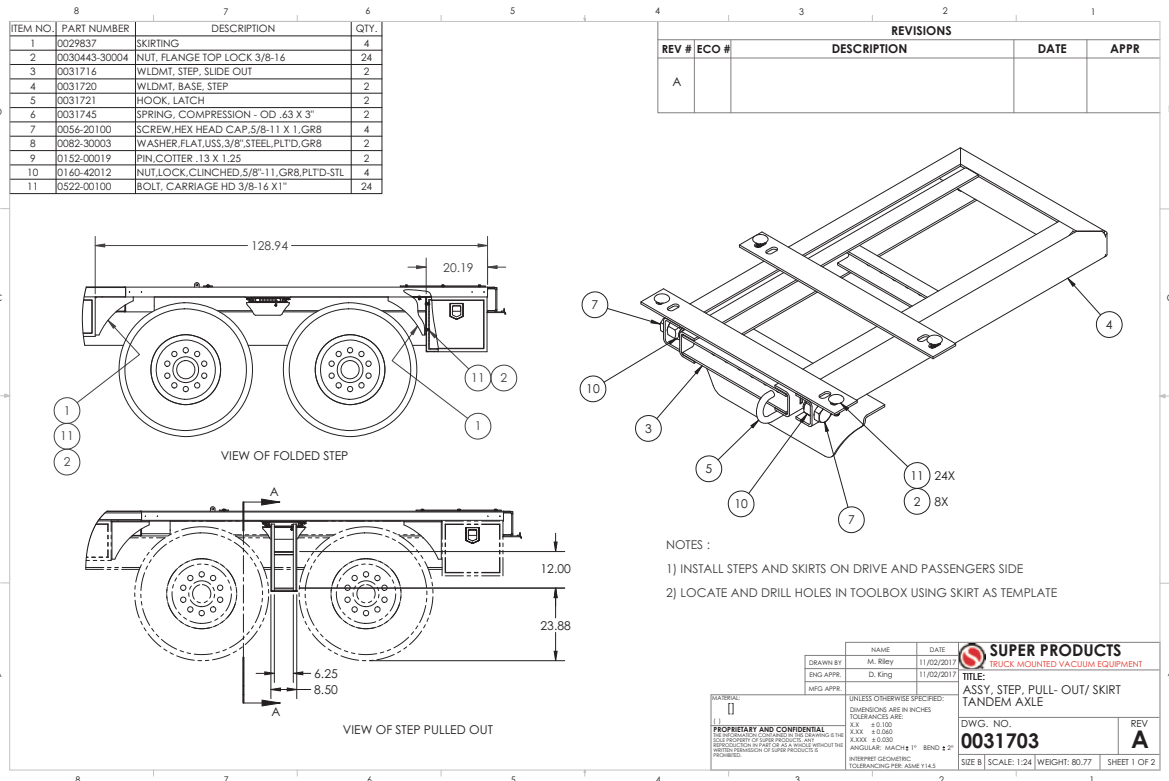


NAME	DATE	 TRUCK MOUNTED VACUUM EQUIPMENT
DRAWN BY	M. Jacobson 06/09/2014	
ENG APPR	M. Jacobson 04/20/2014	
MFG APPR	D. King 01/15/2016	
UNLESS OTHERWISE SPECIFIED:		
DIMENSIONS ARE IN INCHES		
TOLERANCES ARE:		
XXX ± 0.100		
XX ± 0.050		
X ± 0.020		
ANGULAR: MACH ± 1° BEND ± 2°		
INTERSECT: C/F UNIFORM		
DWG. NO.		REV
0020238		F
SIZE B SCALE 1:24 WEIGHT: 937.16		SHEET 1 OF 3

ASSEMBLY, DOT LIGHTING, JETTER Item #0030182



ASSEMBLY, STEP, PULL-OUT/SKIRT TANDEM AXEL Item #0031703



ASSEMBLY, SKIRTING – STEPS Item #0029838

ITEM NO.	PART NUMBER	DESCRIPTION	QTY.
1	0029837	SKIRTING	4
2	0030106	WLDMT. LADDER	2
3	0030443-30004	NUT, FLANGE TOP LOCK 3/8-16	18
4	0522-00100	BOLT, CARRIAGE HD 3/8-16 X1"	18

REVISIONS				
REV #	ECO #	DESCRIPTION	DATE	APPR
A			05/30/2017	A.Messing

NOTE:
1) SKIRTING & STEPS ASSEMBLED ON DRIVER AND PASSENGER SIDE.

NAME	DATE
M. Remy	01/26/2017
A.Messing	02/27/2017

SUPER PRODUCTS
TRUCK MOUNTED VACUUM EQUIPMENT

TITLE: ASSY, SKIRTING - STEPS

DWG. NO. **0029838** REV **A**

UNLESS OTHERWISE SPECIFIED:
DIMENSIONS ARE IN INCHES
TOLERANCES ARE:
XX ±0.000
X.XX ±0.000
X.XXX ±0.000
ANGULAR: MACH ±1° BEND ±2°
INTERSECT: CS/OUTSIDE

PROPRIETARY AND CONFIDENTIAL
THIS DOCUMENT CONTAINS TRADE SECRETS AND PROPRIETARY INFORMATION OF SUPER PRODUCTS, INC. ANY REPRODUCTION OR DISSEMINATION OF THIS DOCUMENT WITHOUT THE WRITTEN PERMISSION OF SUPER PRODUCTS IS PROHIBITED.

TOOLS, PISTON REMOVAL / INSTALL Item #0027120

ITEM NO.	PART NUMBER	DESCRIPTION	QTY.
1	0025924	DISC, PISTON REMOVAL	1
2	0027117	SLEEVE, BOTTLE JACK TOOL	1
3	0027118	ACK, HYDRAULIC BOTTLE, 12 TON W/ GAUGE PORT	1
4	0027135	WRENCH, SHAFT, PISTON REMOVAL	1
5	0027137	WRENCH, PISTON REMOVAL	2
6	0027153	LEVER, STOP, PISTON INSTALLATION	2
7	0027155	WRENCH, SHAFT, PISTON INSTALL	1
8	0027283	GAUGE, 2" DIAL, 0-1000 PSI, 1/4" NPT BOTTOM	1
9	0054-20125	SCREW HEX HEAD CAP 1/2-13 X 1-1/4, GR8	4
10	0137-00002	ELBOW, 90 DEG SCR, STREET 0.25	1

REVISIONS				
REV #	ECO #	DESCRIPTION	DATE	APPR
A	16866			

REMOVE PISTON

USE JACK TO BREAK FREE PISTON, APPROX. 700 PSI ON GAUGE

INSTALL PISTON

USE JACK TO TIGHTEN SHAFT TO PISTON, 700 PSI ON GAUGE

NAME	DATE
C. Lashin	08/01/2017
N. Chishold	10/03/2017

SUPER PRODUCTS
TRUCK MOUNTED VACUUM EQUIPMENT

TITLE: TOOLS, PISTON REMOVAL/INSTALL

DWG. NO. **0027120** REV **A**

UNLESS OTHERWISE SPECIFIED:
DIMENSIONS ARE IN INCHES
TOLERANCES ARE:
XX ±0.000
X.XX ±0.000
X.XXX ±0.000
ANGULAR: MACH ±1° BEND ±2°
INTERSECT: CS/OUTSIDE
TOLERANCING PER ASME Y14.5

SIZE B SCALE: 1:8 WEIGHT: SHEET 1 OF 3

TERMS & CONDITIONS

1. **ORDERS** - All orders are subject to acceptance by an officer of Super Products. Orders for products not regularly carried in stock or requiring special engineering or manufacture are in every case subject to approval by an officer of Super Products. The agreement set forth herein supersedes any prior agreements, representations, or other communications between the parties relating to the subject matter set forth herein. No other terms and conditions shall apply including the terms of any purchase order submitted to Super Products by Buyer, whether or not such terms are inconsistent or conflict with or are in addition to the terms and conditions set forth herein.
2. **PERFORMANCE** - Super Products shall not be liable for failure to complete the contract in accordance with its terms if failure is due to wars, strikes, fires, floods, accidents, and delays in transportation or other causes beyond its reasonable control. **SUPER PRODUCTS SHALL NOT BE LIABLE FOR ANY LOSS OF USE OR LOSS OF PROFIT OR FOR ANY OTHER INDIRECT, CONSEQUENTIAL, INCIDENTAL OR OTHER DAMAGES OR LOSSES DUE TO ANY DELAY IN SCHEDULED DELIVERY.**
3. **EXPERIMENTAL WORK** - Work produced at Buyer's request such as sketches, drawings, design, testing fabrication and materials shall be charged at current rates.
4. **SKETCHES, ENGINEERING DRAWINGS, MODELS** - and all preparatory work created or furnished by Super Products shall remain its exclusive property; and no user of same shall be made, nor may ideas obtained there from be used, except with the consent of and on terms acceptable to Super Products.
5. **CANCELLATION; INSPECTION & ACCEPTANCE** - Orders regularly entered cannot be cancelled except upon terms that will compensate Super Products for any loss or damage sustained. Such loss will be at a minimum of 10% of the purchase price. Buyer agrees that it shall inspect the equipment immediately after receipt and promptly (in no event later than fifteen (15) days after receipt) notify Super Products in writing of any non-conformity or defect. Buyer further agrees that failure to give such prompt notice or the commercial use of the equipment shall constitute acceptance. Acceptance shall be final and Buyer waives the right to revoke acceptance for any reason, whether or not known by Buyer at the time of such acceptance.
6. **SHIPMENT** - All proposals are based on continuous and uninterrupted delivery of the order upon completion, unless specifications distinctly state otherwise. In the event that agreement is reached for Super Products to store completed items, they will be immediately invoiced to Buyer and become due and payable. Storage shall be at the risk of Buyer and Super Products shall be liable only for ordinary care of the property.
7. **STORAGE CHARGES** - Super Products shall charge Buyer at current rates for handling and storing Buyer's property (e.g., truck chassis) held for more than thirty (30) days after notification of availability for shipment. All Buyer's property, or third party's property, that is stored by Super Products is at the risk of Buyer or the other party. Super Products is not liable for any loss or damage thereto caused by fire, water, corrosion, theft, negligence, or any cause beyond its reasonable control.
8. **PRICES** - All orders are subject to current prices in U.S. dollars in effect at the time of order acknowledgement.
9. **SHIPPING TERMS** - Unless otherwise stated, all prices listed are EX WORKS. Title and all risk of loss in the products sold hereunder shall pass to Buyer upon delivery by Super Products at the designated point of manufacture.
10. **TAXES** - Unless otherwise stated, prices listed do not include Federal, State, City or other excise, occupation, sales, tax or similar taxes which are extra and are to be added at rates in effect at time of shipment. If Federal Excise Taxes are included or listed on the reverse side of this paper, they are stated at the rate and regulations in effect at the time this order is written, and are subject to revision in accordance with rates and regulations in effect at time of shipment.

TERMS & CONDITIONS

11. **PRODUCT IMPROVEMENT** - Super Products reserves the right to change manufacturing specifications and procedures in accordance with its product improvement policy.

12. **MOUNTING PRICES** - Mounting prices assume normal factory installation on a truck chassis suitable for the unit purchased. Relocation of batteries, fuel tanks, mufflers, air tanks, etc. will be an additional charge, billed at the standard factory labor rate.

13. **PAYMENT TERMS** - Payment terms are as stated in the signed proposal and on the front of the invoice. Buyer grants Super Products a security interest in the parts and equipment purchased and the proceeds thereof. The security interest shall continue until payment in full of the purchase price and payment and performance by Buyer of all of its other obligations hereunder. Seller is entitled to all remedies of a secured party after default under the Uniform Commercial Code of Wisconsin in addition to all other rights provided by contract and by operation of law. Buyer agrees to pay to Seller, in addition to the interest on overdue sums due, reasonable attorney fees, court costs and other expenses of Seller incurred in enforcing Seller's rights.

14. **INSURANCE** - Buyer represents that they have a program of insurance which adequately protects their interest, and that of their employees and agents, including damage to plant, property and equipment, personal injury of any kind, directly or indirectly related in any way to the equipment, services, repair or parts supplied by Super Products. Accordingly, Buyer waives any claim against Super Products for the foregoing, and on behalf of its insurance company, any right of subrogation in connection therewith.

15. **LIMITED WARRANTY** - Each machine manufactured by Super Products is warranted against defects in material or workmanship for a period of 12 months from the shipment date to the original Buyer provided the equipment is used in a normal and reasonable manner and in accordance with all operating instructions.

Super Products assigns to the original Buyer any warranty extended by the manufacturer of any major component of the equipment that Super Products used in manufacturing or assembling the equipment, but that Super Products did not manufacture. (These include, but are not limited to: the truck engine or any component of the chassis, the vacuum pump, water pump, hydraulics, driveline, power takeoff, and transfer case). Disposition of any warranty claim for such components will be at the sole discretion and remedy of the component supplier. Super Products shall have the right of disposal of parts and components that are replaced.

Super Products agrees, at its sole election, to either repair or replace, excluding labor, FCA Super Products' plant USA, any parts and components manufactured by Super Products. Super Products does not provide any express or implied warranty and shall not be responsible for:

- Normal wear parts, including but not limited to, valves, gaskets, light bulbs, filters, oils and fluids.
- Consumable items, including but not limited to, vacuum hose, sewer hose, nozzles, and vacuum tubes.
- Normal adjustments and maintenance services.

In addition, Super Products agrees to provide extended warranties for certain components as indicated below: (Extended warranty periods begin from the shipment date to the original Buyer).

- 10 Years on the debris body and all poly water tanks (from defects in material or workmanship).
- 3 Years on Super Products' single-piston water pump (from defects in material or workmanship).

This limited warranty does not cover any damage to nonfunctioning or malfunctioning of the equipment, or any components or parts comprising the equipment, due to: (a) any alteration, substitution, misuse or abuse by the Buyer or its agents; (b) their non-compliance with any operator's manual, maintenance manual or warning published by Super Products or the component manufacturer and issued to the Buyer; or (c) their non-compliance with the general standard of reasonable care.

TERMS & CONDITIONS

OTHER THAN AS EXPRESSLY STATED HEREIN, THERE ARE NO OTHER WARRANTIES OF ANY KIND, EXPRESS OR IMPLIED. MORE SPECIFICALLY, THERE ARE NO IMPLIED WARRANTIES OF FITNESS FOR A PARTICULAR PURPOSE OR OF MERCHANTABILITY. BUYER ACKNOWLEDGES AND AGREES THAT SUPER PRODUCTS MAKES NO REPRESENTATIONS OR PROMISES, AND THAT BUYER IS NOT RELYING UPON ANY ORAL OR WRITTEN REPRESENTATIONS OR PROMISES, REGARDING ANY PERFORMANCE CHARACTERISTICS OR CAPABILITIES OF THE EQUIPMENT OR THE COMPONENTS THEREOF (INCLUDING, WITHOUT LIMITATION, THE INTEGRATION OF SUCH COMPONENTS OR THE COMBINATION IN WHICH SUCH COMPONENTS MAY BE USED), EXCEPT AS EXPRESSLY STATED IN THE DESCRIPTION OF THE EQUIPMENT CONTAINED IN THE ACKNOWLEDGMENT OR OTHER WRITTEN DESCRIPTIONS PROVIDED BY SUPER PRODUCTS.

SUPER PRODUCTS' MAXIMUM LIABILITY SHALL NOT EXCEED AND BUYER'S REMEDY IS LIMITED TO EITHER (a) REPAIR OR REPLACEMENT OF THE DEFECTIVE EQUIPMENT, OR AT SELLER'S OPTION (b) RETURN OF THE PRODUCT AND REFUND OF THE PURCHASE PRICE. SUCH REMEDY SHALL BE BUYER'S ENTIRE AND EXCLUSIVE REMEDY. BUYER ACKNOWLEDGES THAT UNDER NO CIRCUMSTANCES SHALL SUPER PRODUCTS BE LIABLE FOR ANY SPECIAL, INDIRECT, INCIDENTAL OR CONSEQUENTIAL DAMAGES OF ANY KIND ARISING IN CONNECTION WITH OR OUT OF THE EQUIPMENT AND THAT SUPER PRODUCTS' LIABILITY, WHETHER IN CONTRACT, TORT, UNDER ANY WARRANTY OR OTHERWISE SHALL NOT EXCEED THE RETURN OF THE AMOUNT OF THE PURCHASE PRICE PAID BY BUYER, WHICH AMOUNT MAY BE REDUCED DUE TO DEPRECIATION AND DAMAGE BEYOND NORMAL WEAR AND TEAR. BUYER UNDERSTANDS THAT THE LIMITATION OF SUPER PRODUCTS' LIABILITY RELATING TO THE EQUIPMENT IS A MATERIAL TERM OF THE PARTIES' TRANSACTION.

16. PATENT INDEMNITY - In the event of a claim against Buyer alleging that the equipment purchased from Super Products infringes a U.S. patent subsisting when the equipment was shipped, Super Products shall, at its sole option, (a) procure for the Buyer the right to use the equipment; (b) replace the equipment with non-infringing equipment; (c) modify the equipment to be non-infringing; (d) remove the equipment and refund the purchase price, less both depreciation, at the rate of twenty percent (20%) per year and less damage beyond normal wear and tear; or (e) defend, at its own expense, all suits instituted against Buyer insofar as same are based upon any claim that the Buyer's operation of the equipment, or any part thereof, is an infringement of a U.S. patent under the proviso that: (i) Super Products be notified, in writing, by Buyer promptly upon assertion of claim; (ii) Super Products is given authority by Buyer to assume full and exclusive control of the defense and settlement the claim or suit; and (iii) Buyer provides all information and assistance to Super Products, at Buyer's expense, as is reasonably necessary for the defense of the claim or suit. Super Products may, at its option, intervene in any suit or action brought against the Buyer on such claim.

17. This agreement is performable in and shall be construed according to the laws of the State of Wisconsin. Our failure at any time to exercise any right we may have under this agreement shall not constitute a waiver thereof nor prejudice our right to enforce same thereafter.

18. This order, including the above terms and conditions, contains the complete and final agreement between the parties hereto and no other agreement in any way modifying any of said terms and conditions will be binding on us unless in writing and agreed to by an authorized representative of Super Products. 07/31/2017

19. Parts returns are subject to a 25% restocking fee, and must be returned within 30 days of invoice receipt.

LIMITED WARRANTY – EFFECTIVE JUNE 1, 2018

This limited warranty supersedes all previous Super Products warranties and is exclusive with no other guarantees or warranties expressed or implied.

LIMITED WARRANTY – Subject to the terms and conditions below, Super Products warrants to its original purchaser that new equipment sold after the effective date of this limited warranty is free of defects in material or workmanship at the time it was shipped from Super Products for a period of 12 months provided the equipment is used in a normal and reasonable manner and in accordance with all operating instructions. Super Products agrees, at its sole election, to either repair or replace (inclusive of labor) any parts and components manufactured by Super Products. Super Products must be notified with thirty (30) days of such defect or failure, at which time Super Products will provide instructions on the warranty procedures to be followed. Super Products will not honor claims for warranty that have not been previously authorized via the warranty procedures. (labor rates and times must be preapproved in writing).

In addition, Super Products agrees to provide extended warranties for certain components as indicated below: (Extended warranty periods begin from the shipment date to the original Buyer).

- 10 Years on the debris body and all poly water tanks (from defects in material or workmanship).
- 3 Years on Super Products' single-piston water pump (from defects in material or workmanship).

Super Products does not provide any express or implied warranty to (and Super Products shall not be responsible for)

- Any major components of the equipment that Super Products used in manufacturing or assembling the equipment but that Super Products did not manufacture (including, but not limited to, truck engines or any component of the chassis, vacuum pump, water pump, and hydraulics, driveline, power takeoff, and transfer case). Super Products assigns to the Buyer any warranty extended by the manufacturer of such components. Disposition of any warranty claim for such components will be at the sole discretion and remedy of the component supplier. Super Products shall have the right of disposal of parts and components that are replaced.
- Normal wear parts, including but not limited to, valves, gaskets, light bulbs, filters, oils and fluids.
- Consumable items, including but not limited to, vacuum hose, sewer hose, nozzles, and vacuum tubes.
- Normal adjustments and maintenance services.

This limited warranty does not cover any damage to non-functioning or malfunctioning equipment, or any components or parts comprising the equipment, due to Buyer or its Agent's: (a) alteration, substitution, misuse or abuse; (b) non-compliance with any operator's manual, maintenance manual or warning published by Super Products or the component manufacturer and issued to the Buyer; or (c) non-compliance with the general standard of reasonable care.

OTHER THAN AS EXPRESSLY STATED HEREIN, THERE ARE NO OTHER WARRANTIES OF ANY KIND, EXPRESS OR IMPLIED. MORE SPECIFICALLY, THERE ARE NO IMPLIED WARRANTIES OF FITNESS FOR A PARTICULAR PURPOSE OR OF MERCHANTABILITY. BUYER ACKNOWLEDGES AND AGREES THAT SUPER PRODUCTS MAKES NO REPRESENTATIONS OR PROMISES, AND THAT BUYER IS NOT RELYING UPON ANY ORAL OR WRITTEN REPRESENTATIONS OR PROMISES REGARDING ANY PERFORMANCE CHARACTERISTICS OR CAPABILITIES OF THE EQUIPMENT OR THE COMPONENTS THEREOF (INCLUDING, WITHOUT LIMITATION, THE INTEGRATION OF SUCH COMPONENTS OR THE COMBINATION IN WHICH SUCH COMPONENTS MAY BE USED), EXCEPT AS EXPRESSLY STATED IN THE DESCRIPTION OF THE EQUIPMENT CONTAINED IN THE ACKNOWLEDGMENT OR OTHER WRITTEN DESCRIPTIONS PROVIDED BY SUPER PRODUCTS.

SUPER PRODUCTS' MAXIMUM LIABILITY SHALL NOT EXCEED, AND BUYER'S REMEDY IS LIMITED TO, EITHER (a) REPAIR OR REPLACEMENT OF THE DEFECTIVE EQUIPMENT, OR AT SELLER'S OPTION (b) RETURN OF THE PRODUCT AND REFUND OF THE PURCHASE PRICE. SUCH REMEDY SHALL BE BUYER'S ENTIRE AND EXCLUSIVE REMEDY. BUYER ACKNOWLEDGES THAT UNDER NO CIRCUMSTANCES SHALL SUPER PRODUCTS BE LIABLE FOR ANY SPECIAL, INDIRECT, INCIDENTAL OR CONSEQUENTIAL DAMAGES OF ANY KIND ARISING IN CONNECTION WITH OR OUT OF THE EQUIPMENT AND THAT SUPER PRODUCTS' LIABILITY, WHETHER IN CONTRACT, TORT, UNDER ANY WARRANTY OR OTHERWISE SHALL NOT EXCEED THE RETURN OF THE AMOUNT OF THE PURCHASE PRICE PAID BY BUYER, WHICH AMOUNT MAY BE REDUCED DUE TO DEPRECIATION AND DAMAGE BEYOND NORMAL WEAR AND TEAR. BUYER UNDERSTANDS THAT THE LIMITATION OF SUPER PRODUCTS' LIABILITY RELATING TO THE EQUIPMENT IS A MATERIAL TERM OF THE PARTIES' TRANSACTION.

